

RAB3C PAB

Rab3C Polyclonal Antibody

货号: 21043

基因符号: RAB3C

描述: Rab3C Rabbit Polyclonal Antibody

背景: The Rab3 small G protein family consists of four members, Rab3A, -3B, -3C, and -3D. Rab3C is a small GTP-binding protein that associates with secretory granules of endocrine and exocrine cells. Rab3C is found in brain, adrenal gland and pituitary.

免疫原: A synthetic peptide from the N-terminal region of human Rab3C

经过测试的应用: ELISA, WB, IHC

推荐稀释度:

ELISA: 1:100-1:5000

WB: 1:100-1:2000

IHC: 1:100-1:1000

浓度: 0.2 mg/ml

种属反应性: Rabbit

形式: Liquid

克隆性: Polyclonal

纯化: Purified from serum

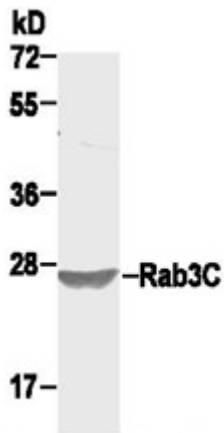
Preservative: No

成分: PBS (without Mg^{2+} and Ca^{2+}), pH 7.4, 150 mM NaCl, 50% glycerol

种属反应性: Rab3C antibody recognizes Rab3C from vertebrates.

储存条件: Store at $-20^{\circ}C$. Avoid repeated freezing and thawing

Western blot:



WB: anti-Rab3C pAb

HepG cell lysate was used for Western blot with anti Rab3C polyclonal antibody (cat # 21043).