

RAB3A PAB

Rab35 Polyclonal Antibody

货号: 21078

基因符号: RAB35

描述: Rab35 Rabbit Polyclonal Antibody

背景: The Rab family of GTPases regulates eukaryotic vesicular membrane traffic. Rab35 is with both plasma membrane and endosomal localization, and has been implicated in diverse processes that include T-cell receptor recycling, oocyte yolk protein recycling and cytokinesis. Rab35 regulates neurite outgrowth in neuronal-like cells, and can induce protrusions.

免疫原: A synthetic peptide from the internal region of human Rab35 protein

经过测试的应用: ELISA, WB, IHC, IP

推荐稀释度:

ELISA: 1:100-1:5000

WB: 1:200-1:1000

IHC: 1:10-1:100

浓度: 0.2 mg/ml

种属反应性: Rabbit

形式: Liquid

克隆性: Polyclonal

亚型: IgG

纯化: Purified from serum

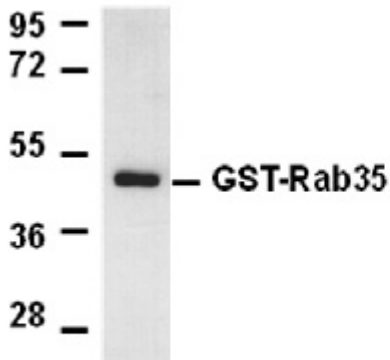
Preservative: No

成分: PBS (without Mg^{2+} and Ca^{2+}), pH 7.4, 150 mM NaCl, 50% glycerol

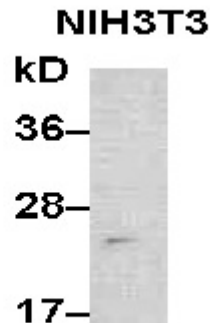
种属反应性: Rab35 antibody recognizes Rab35 proteins from vertebrates.

储存条件: Store at $-20^{\circ}C$. Avoid repeated freezing and thawing

Western blot:



WB: anti-Rab35 pAb



WB: anti-Rab35 pAb

Purified recombinant GST-tagged Rab35 proteins (top panel, cat.# 10132) and NIH3T3 whole-cell lysate was used for Western blot with anti Rab35 polyclonal antibody (cat # 21078).