

## RAB39 PAB

产品名称: Rab39 兔多抗

货号: 21082

基因符号: RAB39

描述: Rab39 兔多抗

背景: Ras-related protein Rab39 is a Golgi-associated protein involved in endocytosis.

免疫原: A synthetic peptide from the internal region of human Rab39 蛋白

经过测试的应用: ELISA, WB, IHC, IP

推荐稀释比:

ELISA: 1:100-1:5000

WB: 1:100-1:1000

IHC: 1:100-1:1000

**Concentration:** 0.2 mg/ml

种属反应性: Rabbit

形式: Liquid

克隆性: Polyclonal

亚型: IgG

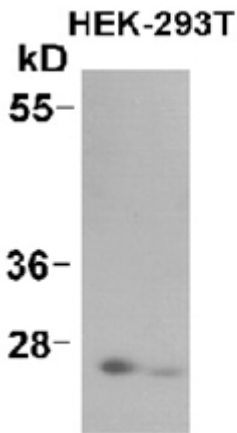
纯化: Purified from serum

成分: PBS (without  $Mg^{2+}$  and  $Ca^{2+}$ ), pH 7.4, 150 mM NaCl, 50% glycerol

种属反应性: Rab39 antibody recognizes Rab39 proteins from vertebrates.

储存条件: Store at  $-20^{\circ}C$ . Avoid repeated freezing and thawing

蛋白质印迹:



WB: anti-Rab39 pAb

HEK-293T whole-cell lysate was used for Western blot with anti Rab39 兔多抗 (cat # 21082).