

RAB31 PAB

Rab31 Polyclonal Antibody

货号: 21063

基因符号: RAB31

描述: Rab31 Rabbit Polyclonal Antibody

背景: Rab31 is a member of the Rab-subfamily of Ras-related small GTPases, and plays a role in the trans-Golgi network to endosome trafficking.

免疫原: A synthetic peptide from the C-terminal region of human Rab31

经过测试的应用: ELISA, WB, IHC, IP

推荐稀释度:

ELISA: 1:100-1:5000

WB: 1:200-1:2000

IHC: 1:10-1:500

浓度: 0.2 mg/ml

种属反应性: Rabbit

形式: Liquid

克隆性: Polyclonal

亚型: IgG

纯化:: Purified from serum

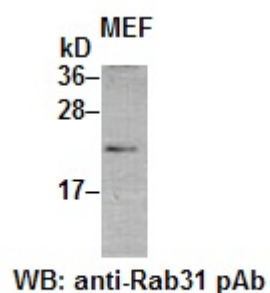
Preservative: No

成分: PBS (without Mg^{2+} and Ca^{2+}), pH 7.4, 150 mM NaCl, 50% glycerol

种属反应性: Rab31 antibody recognizes Rab31 from vertebrates.

储存条件:: Store at $-20^{\circ}C$. Avoid repeated freezing and thawing

Western blot:



MEF cell lysate was used for Western blot with anti Rab31 polyclonal antibody (cat # 21063).