

## RAB30 PAB

### Rab30 Polyclonal Antibody

**Cat. #:** 21062

**Gene Symbol:** RAB30

**Description:** Anti-Rab30 Rabbit Polyclonal Antibody

**Background:** Rab30 is a member of the Ras-super-family small GTPases. Rab30 is involved in intracellular trafficking, and is localized in trans-Golgi.

**Immunogen:** A synthetic peptide from the C-terminal of human Rab30 protein

**Applications:** ELISA, WB, IHC, IP

**Recommended Dilutions:**

ELISA: 1:100–1:5000

WB: 1:100–1:1000

IHC: 1:100–1:1000

**Concentration:** 0.2 mg/ml

**Host Species:** Rabbit

**Format:** Liquid

**Clonality:** Polyclonal

**Isotype:** IgG

**Purity:** Purified from serum

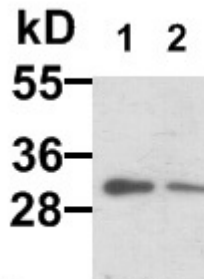
**Preservative:** No

**Constituents:** PBS (without  $Mg^{2+}$  and  $Ca^{2+}$ ), pH 7.4, 150 mM NaCl, 50% glycerol

**Species Reactivity:** Rab30 antibody recognizes Rab30 proteins from vertebrates.

**Storage Conditions:** Store at  $-20^{\circ}C$ . Avoid repeated freezing and thawing

## Western blot:



## WB:anti-Rab30 pAb

EC-1 (lane 1) and HepG2 (lane 2) whole-cell lysates were used for Western blots with anti Rab30 polyclonal antibody (cat # 21062).