

RAB28 PAB

产品名称: Rab28 兔多抗

货号: 21061

基因符号: RAB28

描述: Rab28 兔多抗

背景: Rab28 encodes a member of the Rab-subfamily of Ras-related small GTPases, and is involved in regulating intracellular trafficking.

免疫原: A synthetic peptide from the C-terminal region of human Rab28

经过测试的应用: ELISA, WB, IHC, IP

推荐稀释比:

ELISA: 1:100-1:5000

WB: 1:100-1:1000

IHC: 1:100-1:1000

Concentration: 0.2 mg/ml

种属反应性: Rabbit

形式: Liquid

克隆性: Polyclonal

亚型: IgG

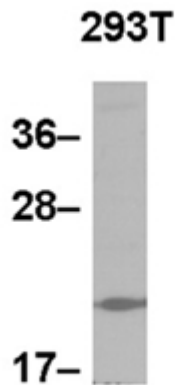
纯化: Purified from serum

成分: PBS (without Mg^{2+} and Ca^{2+}), pH 7.4, 150 mM NaCl, 50% glycerol

种属反应性: Rab28 antibody recognizes Rab28 of vertebrates.

储存条件: Store at $-20^{\circ}C$. Avoid repeated freezing and thawing

蛋白质印迹:



WB: anti-Rab28 pAb

Whole-cell lysate of HEK-293T cells was used for western blot with the polyclonal anti Rab28 antibody (Cat # 21061).