

RAB26 PAB

Rab26 Polyclonal Antibody

货号: 21058

基因符号: RAB26

描述: Rab26 Rabbit Polyclonal Antibody

背景: Ras-related protein Rab26 plays a role in recruiting mature granules to the plasma membrane upon beta-adrenergic stimulation.

免疫原: A synthetic peptide from the C-terminal of human Rab26 protein

经过测试的应用: ELISA, WB, IHC, IP

推荐稀释度:

ELISA: 1:100-1:5000

WB: 1:100-1:1000

IHC: 1:100-1:1000

浓度: 0.2 mg/ml

种属反应性: Rabbit

形式: Liquid

克隆性: Polyclonal

亚型: IgG

纯化: Purified from serum

Preservative: No

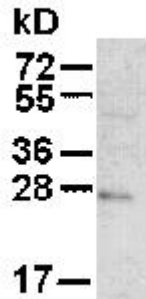
成分: PBS (without Mg^{2+} and Ca^{2+}), pH 7.4, 150 mM NaCl, 50% glycerol

种属反应性: Rab26 antibody recognizes Rab26 proteins from vertebrates.

储存条件: Store at $-20^{\circ}C$. Avoid repeated freezing and thawing

Western blot:

Ec-1 cell



Wb: anti-Rab26 pAb

EC-1 whole-cell lysate was used for Western blot with anti Rab26 polyclonal antibody (cat # 21058).