

RAB25 PAB

Rab25 Polyclonal Antibody

货号: 21056

基因符号: RAB25

描述: Rab25 Rabbit Polyclonal Antibody

背景: Ras-related protein Rab25 is involved in recycling vesicles. It has been associated with the progression and aggressiveness of certain tumors.

免疫原: A synthetic peptide from the internal region of human Rab25 protein

经过测试的应用: ELISA, WB, IHC

推荐稀释度: ELISA 1:100-1:5000

WB 1:100-1:1000

IHC 1:100-1:1000

浓度: 0.2 mg/ml

种属反应性: Rabbit

形式: Liquid

克隆性: Polyclonal

亚型: IgG

纯化: Purified from serum

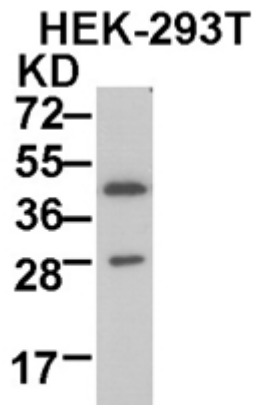
Preservative: No

成分: PBS (without Mg^{2+} and Ca^{2+}), pH 7.4, 150 mM NaCl, 50% glycerol

种属反应性: Rab25 antibody recognizes Rab25 proteins from vertebrates.

储存条件: Store at $-20^{\circ}C$. Avoid repeated freezing and thawing

Western blot:



WB: anti-Rab25 pAb

HEK-293T whole-cell lysate was used for Western blot with anti Rab25 polyclonal antibody (cat # 21056).