

RAB14 PAB

产品名称: Rab14 兔多抗

货号: 21047

基因符号: RAB14

描述: Rab14 兔多抗

背景: Small GTPase Rab14 localizes to the Golgi/TGN and to early endosomes, and is involved in the apical targeting pathway.

免疫原: A synthetic peptide from the C-terminal end of Rab14 protein.

经过测试的应用: ELISA, WB, IHC

推荐稀释比: ELISA 1:100-1:5000

WB 1:100-1:2000

IHC 1:100-1:1000

Concentration: 0.2 mg/ml

种属反应性: Rabbit

形式: Liquid

克隆性: Polyclonal

亚型: IgG

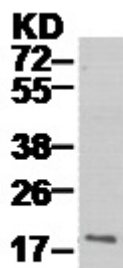
纯化: Purified from serum

成分: PBS (without Mg^{2+} and Ca^{2+}), pH 7.4, 150 mM NaCl, 50% glycerol

种属反应性: Rab14 antibody recognizes Rab14 from vertebrates.

储存条件: Store at $-20^{\circ}C$. Avoid repeated freezing and thawing

蛋白质印迹:



WB: anti-Rab14 pAb

HepG cell lysate was used for Western blot with anti Rab14 兔多抗 (cat # 21047).