

## RAB13 PAB

### Rab13 Polyclonal Antibody

货号: 21046

基因符号: RAB13

描述: Rab13 Rabbit Polyclonal Antibody

背景: Rab GTPases are Ras-like small molecular weight GTP-binding proteins that are involved in various steps along the exocytic and endocytic pathways. Rab13 plays a critical role in regulating both the structure and function of tight junctions in polarized epithelial cells.

免疫原: A synthetic peptide from the internal region of human Rab13 protein

经过测试的应用: ELISA, WB, IHC, IP

推荐稀释度:

ELISA: 1:100-1:5000

WB: 1:100-1:1000

IHC: 1:10-1:500

浓度: 0.2 mg/ml

种属反应性: Rabbit

形式: Liquid

克隆性: Polyclonal

亚型: IgG

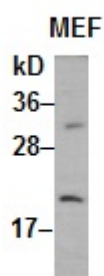
纯化:: Purified from serum

**Preservative:** No

成分: PBS (without  $Mg^{2+}$  and  $Ca^{2+}$ ), pH 7.4, 150 mM NaCl, 50% glycerol

种属反应性: Rab13 antibody recognizes Rab13 proteins from vertebrates.

储存条件:: Store at  $-20^{\circ}C$ . Avoid repeated freezing and thawing



WB: anti-Rab13 pAb

MEF whole-cell lysate was used for Western blot with Rab13 polyclonal antibody (cat # 21046).