

## RAB12 PAB

### Rab12 Polyclonal Antibody

货号: 21076

基因符号: RAB12

描述: Rab12 Rabbit Polyclonal Antibody

背景: Rab12 protein is a member of the Rab subfamily of Ras-related small GTPases. Rab12 might regulate vesicular trafficking.

免疫原: A synthetic peptide from the internal region of Rab12

经过测试的应用: ELISA, WB, IHC, IP

推荐稀释度:

ELISA: 1:100-1:5000

WB: 1:200-1:2000

IHC: 1:10-1:100

浓度: 0.2 mg/ml

种属反应性: Rabbit

形式: Liquid

克隆性: Polyclonal

亚型: IgG

纯化:: Purified from serum

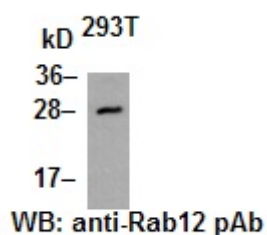
**Preservative:** No

成分: PBS (without  $Mg^{2+}$  and  $Ca^{2+}$ ), pH 7.4, 150 mM NaCl, 50% glycerol

种属反应性: Rab12 antibody recognizes Rab12 from vertebrates.

储存条件:: Store at  $-20^{\circ}C$ . Avoid repeated freezing and thawing

**Western blot:**



HEK 293T cell lysate was used for Western blot with anti Rab12 polyclonal antibody (cat # 21076).

