

RAB11 PAB

Rab11 Polyclonal Antibody

货号: 21157

基因符号: RAB11

描述: Rab11 Rabbit Polyclonal Antibody

背景: Small GTPases of the Rab-family are crucial elements of the machinery that controls membrane traffic. Rab11 has been shown to control traffic through the recycling endosome. 免疫原: A synthetic peptide near the N-terminus of human Rab11.

免疫原: A synthetic peptide near the N-terminus of human Rab11.

经过测试的应用: ELISA, WB, IHC, IP

推荐稀释度:

ELISA: 1:100-1:5000

WB: 1:100-1:1000

IHC: 1:100-1:1000

浓度: 0.15 mg/ml

种属反应性: Rabbit

形式: Liquid

克隆性: Polyclonal

亚型: IgG

纯化: Purified from serum

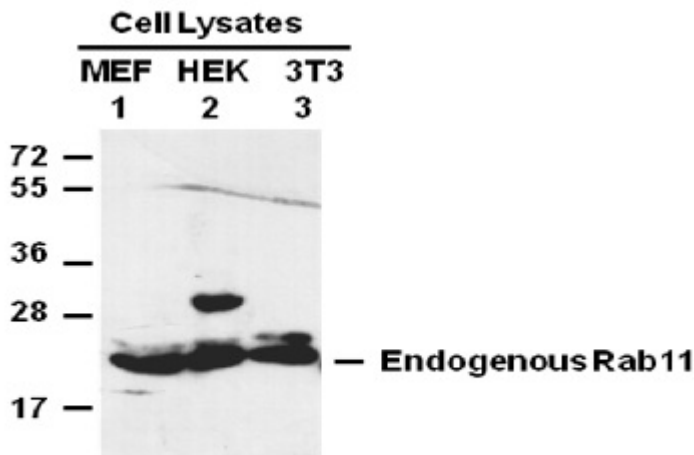
Preservative: No

成分: PBS (without Mg^{2+} and Ca^{2+}), pH 7.4, 150 mM NaCl, 50% glycerol

种属反应性: Rab11 antibody recognizes Rab11 of vertebrates.

储存条件: Store at $-20^{\circ}C$. Avoid repeated freezing and thawing

Western blot:



WB: anti-Rab11BpAb

Western blot analysis of Rab11 proteins.

Whole-cell lysates of MEF (lane 1), HEK293T (lane 2) and 3T3 (lane 3) cells were used for western blots with the anti Rab11 rabbit polyclonal antibody (货号 21157).