

PTEN(R159S)**PTEN (R159S)**

货号: 26313

基因符号: PTEN, 10q23del, BZS, DEC, GLM2, MHAM, MMAC1, PTEN1, TEPI, MMAC1, PTEN1, TEPI

描述: PTEN (R159S) Mouse Monoclonal Antibody

背景: Phosphatase and tensin homolog (PTEN) was identified as a tumor suppressor that is mutated in a large number of cancers at high frequency. It is one of the most commonly lost tumor suppressors in human cancer. During tumor development, mutations and deletions of PTEN occur that inactivate its enzymatic activity leading to increased cell proliferation and reduced cell death. Frequent genetic inactivation of PTEN occurs in glioblastoma, endometrial cancer, and prostate cancer; and reduced expression is found in many other tumor types such as lung and breast cancer.

Immunogen: A synthetic peptide from the internal region of PTEN which includes the mutation of R159S, human origin.

Tested applications: ELISA, WB

Recommended dilutions:

ELISA: 1:1000–1:5000

WB: 1:500–1:1000

IHC: 1:50–1:100

浓度: 1 mg/ml

种属反应性: Mouse

克隆性: Monoclonal

纯化: Purified from ascites

形式: Liquid

Storage buffer:

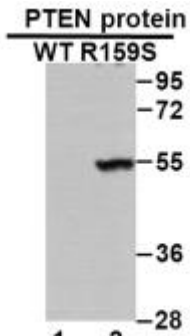
Preservative: no

成分: PBS (without Mg²⁺ and Ca²⁺), pH 7.4, 150 mM NaCl, 50% glycerol

种属反应性: Recognizes EGFR (L747–P753) S, but not wild type EGFR protein from vertebrates.

储存条件: Store at -20°C. Avoid repeated freezing and thawing.

Western blot:



WB: Anti- PTEN (R159S) mAb

Western blot analysis of recombinant PTEN (R159S) and wild type proteins. Purified His-tagged FGFR1 (R159S) protein (lane 2) and corresponding wild type protein (lane 1) were blotted with PTEN (R159S) monoclonal antibody (货号26313). PTEN (R159S) Mouse Monoclonal Antibody.