

## **PRLR (DMC462) IGG1 CHIMERIC MAB**

目录: 28238

产品名称: PRLR(DMC462) IgG1 Chimeric Monoclonal Antibody

基因符号: Prolactin receptor; PRL-R

描述: PRLR antibody(DMC462) IgG1 Chimeric Monoclonal Antibody

背景: This gene encodes a receptor for the anterior pituitary hormone; prolactin; and belongs to the type I cytokine receptor family. Prolactin-dependent signaling occurs as the result of ligand-induced dimerization of the prolactin receptor. Several alternatively spliced transcript variants encoding different membrane-bound and soluble isoforms have been described for this gene; which may function to modulate the endocrine and autocrine effects of prolactin in normal tissue and cancer. [provided by RefSeq; Feb 2011]

经过测试的应用: Flow Cyt

推荐稀释度: Flow Cyt 1:100

种属反应性: Rabbit

亚型: Rabbit:Human Fc chimeric IgG1

纯化: Purified from cell culture supernatant by affinity chromatography

种属反应性: Human PRLR

成分: Lyophilized from sterile PBS, pH 7.4. 5 % – 8% trehalose is added as protectants before lyophilization.

储存和运输: Store at -20°C to -80°C for 12 months in lyophilized form.

After reconstitution, if not intended for use within a month, aliquot and store at -80°C (Avoid repeated freezing and thawing).

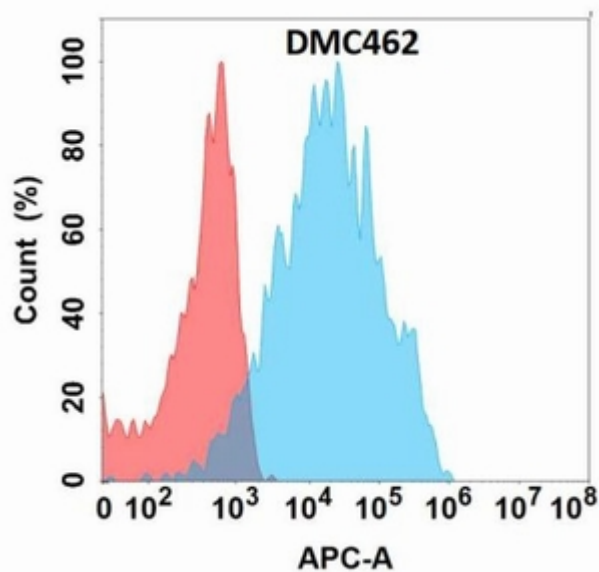


Figure 1. Flow cytometry analysis with PRLR (DMC462) on Expi293 cells transfected with human PRLR (Blue histogram) or Expi293 transfected with irrelevant protein (Red histogram).