

GDF15 MAB (PONSEGROMAB)

Cat.#: 28093

Product Name: Anti-GDF15(Ponsegromab) Monoclonal Antibody

Synonyms: GDF-15;MIC-1;MIC1;NAG-1;PDF;PLAB;PTGFB

Description: Anti-GDF15(ponsegromab) Monoclonal Antibody

Background: Research grade biosimilar. Not for use in therapeutic or diagnostic procedures for humans or animals.

Applications: Flow Cyt

Recommended Dilutions: Flow Cyt 1:100

Host Species: Humanized

Isotype: IgG1

Purification: Purified from cell culture supernatant by affinity chromatography

Species Reactivity: Human GDF15

Constituents: Lyophilized from sterile PBS, pH 7.4. 5 % – 8% trehalose is added as protectants before lyophilization.

Storage & Shipping: Store at -20°C to -80°C for 12 months in lyophilized form. After reconstitution, if not intended for use within a month, aliquot and store at -80°C (Avoid repeated freezing and thawing).

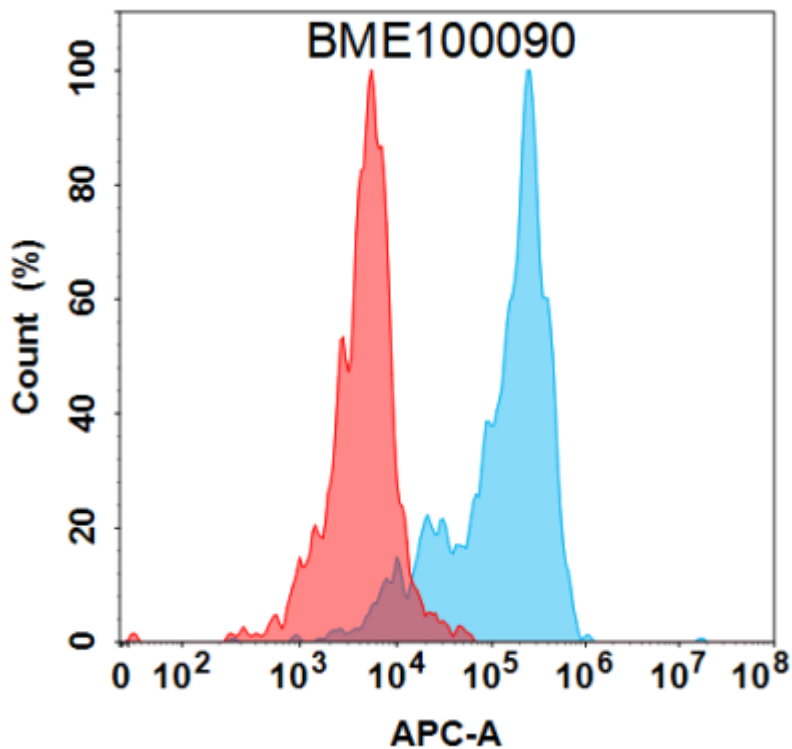


Figure 1. Flow cytometry analysis under cell membrane permeable condition with 1 $\mu\text{g}/\text{mL}$ Anti-GDF15 (ponsegromab biosimilar) mAb (28093) on Expi293 cells transfected with Human GDF15 protein (Blue histogram) or Expi293 transfected with irrelevant protein (Red histogram).