

## CCR2 MAB (PLOZALIZUMAB)

目录: 28090

产品名称: CCR2(Plozalizumab) Monoclonal Antibody

基因符号: CC-

CKR-2;CCR2A;CCR2B;CD192;CKR2;CKR2A;CKR2B;CMKBR2;MCP-1-R

描述: CCR2(plozalizumab ) Monoclonal Antibody

背景: Research grade biosimilar. Not for use in therapeutic or diagnostic procedures for humans or animals.

经过测试的应用: Flow Cyt

推荐稀释度: Flow Cyt 1:100

种属反应性: Humanized

亚型: IgG1

纯化: Purified from cell culture supernatant by affinity chromatography

种属反应性: Human CCR2

成分: Lyophilized from sterile PBS, pH 7.4. 5 % – 8% trehalose is added as protectants before lyophilization.

储存和运输: Store at -20°C to -80°C for 12 months in lyophilized form. After reconstitution, if not intended for use within a month, aliquot and store at -80°C (Avoid repeated freezing and thawing).

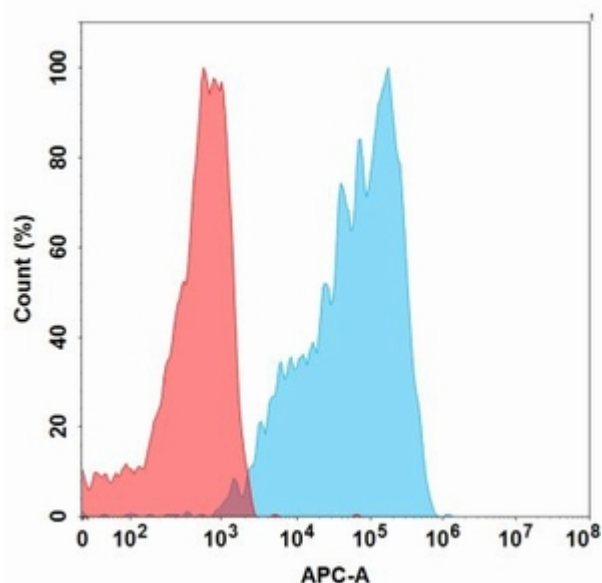


Figure 1. Flow cytometry analysis with 1 µg/mL CCR2 (plozalizumab biosimilar) mAb (28090) on Expi293 cells transfected with Human CCR2 protein (Blue histogram) or Expi293 transfected with irrelevant protein (Red histogram).

