

GM-CSF MAB (PLONMARLIMAB)

Cat.#: 28125

Product Name: Anti-GM-CSF(Plonmarlimab) Monoclonal Antibody

Synonyms: CSF;CSF2

Description: Anti-GM-CSF(plonmarlimab) Monoclonal Antibody

Background: Research grade biosimilar. Not for use in therapeutic or diagnostic procedures for humans or animals.

Applications: ELISA; Flow Cyt

Recommended Dilutions: ELISA 1:5000-10000; Flow Cyt 1:100

Host Species: Humanized

Isotype: IgG1

Purification: Purified from cell culture supernatant by affinity chromatography

Species Reactivity: Human GM-CSF

Constituents: Lyophilized from sterile PBS, pH 7.4. 5 % – 8% trehalose is added as protectants before lyophilization.

Storage & Shipping: Store at -20°C to -80°C for 12 months in lyophilized form. After reconstitution, if not intended for use within a month, aliquot and store at -80°C (Avoid repeated freezing and thawing).

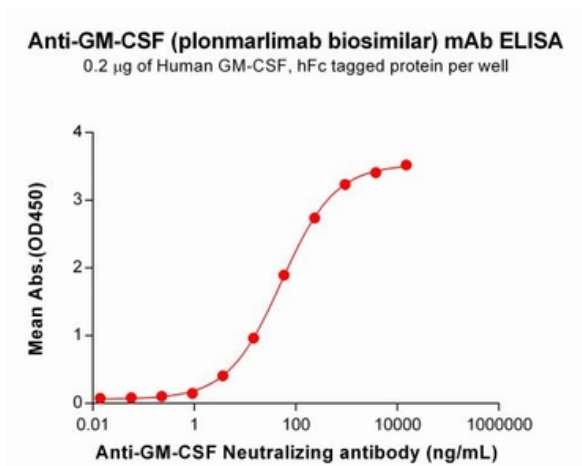


Figure 1. ELISA plate pre-coated by 2 µg/mL (100 µl/well) Human GM-CSF Protein, hFc Tag (11365) can bind Anti-GM-CSF Neutralizing antibody (28125) in a linear range of 0.92-937.50 ng/mL. In order to specifically detect 28125, mouse anti-human Fab-specific antibody was used as detection antibody.

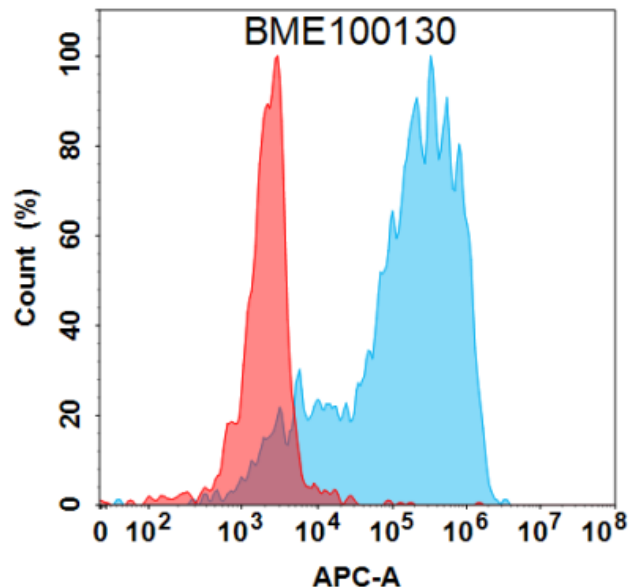


Figure 2. Flow cytometry analysis under cell membrane permeable condition with 1 µg/mL Anti-GM-CSF (plonmarlimab biosimilar) mAb (28125) on Expi293 cells transfected with Human GM-CSF protein (Blue histogram) or Expi293 transfected with irrelevant protein (Red histogram).



Product Description

Pioneering GTPase and Oncogene Product Development since 2010
