

PGF (DM190) RABBIT MAB

Cat.#: 28533

Product Name: Anti-PGF(DM190) Rabbit Monoclonal Antibody

Synonyms: DI2S1900; PGFL; PIGF; PLGF; PIGF-2; SHGC-10760

Description: Anti-PGF antibody(DM190) Rabbit Monoclonal Antibody

Background: This gene encodes a growth factor found in placenta which is homologous to vascular endothelial growth factor. Alternatively spliced transcripts encoding different isoforms have been found for this gene.

Applications: ELISA; Flow Cyt

Recommended Dilutions: ELISA 1:5000-10000; Flow Cyt 1:100

Host Species: Rabbit

Isotype: Rabbit IgG

Purification: Purified from cell culture supernatant by affinity chromatography

Species Reactivity: Human PGF

Constituents: Lyophilized from sterile PBS, pH 7.4. 5 % – 8% trehalose is added as protectants before lyophilization.

Storage & Shipping: Store at -20°C to -80°C for 12 months in lyophilized form. After reconstitution, if not intended for use within a month, aliquot and store at -80°C (Avoid repeated freezing and thawing).

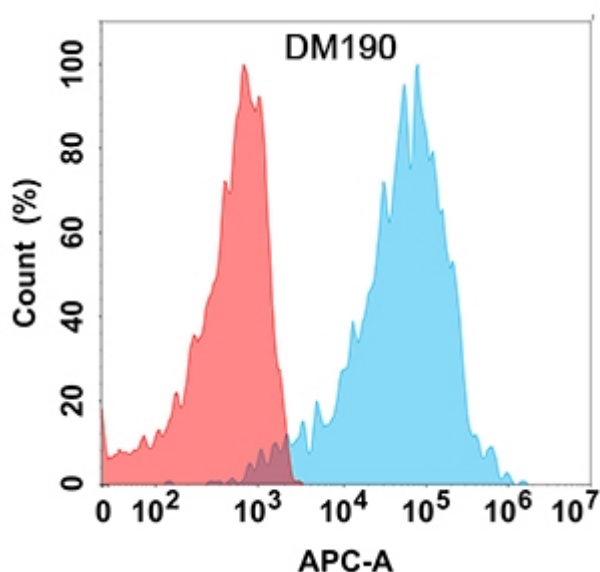


Figure 1. Flow cytometry analysis with Anti-PGF (DM190) on Expi293 cells transfected with human PGF (Blue histogram) or Expi293 transfected with irrelevant protein (Red histogram).



Product Description

Pioneering GTPase and Oncogene Product Development since 2010
