

## PDL2 (DM169) RABBIT MAB

**Cat.#:** 28512

**Product Name:** Anti-PDL2(DM169) Rabbit Monoclonal Antibody

**Synonyms:** B7DC; bA574F11.2; Btdc; CD273; PD-L2; PDCD1L2; PDL2

**Description:** Anti-PDL2 antibody(DM169) Rabbit Monoclonal Antibody

**Background:** Involved in the costimulatory signal; essential for T-cell proliferation and IFNG production in a PDCD1-independent manner. Interaction with PDCD1 inhibits T-cell proliferation by blocking cell cycle progression and cytokine production (By similarity).

**Applications:** ELISA; Flow Cyt

**Recommended Dilutions:** ELISA 1:5000-10000; Flow Cyt 1:100

**Host Species:** Rabbit

**Isotype:** Rabbit IgG

**Purification:** Purified from cell culture supernatant by affinity chromatography

**Species Reactivity:** Human PDL2

**Constituents:** Lyophilized from sterile PBS, pH 7.4. 5 % – 8% trehalose is added as protectants before lyophilization.

**Storage & Shipping:** Store at  $-20^{\circ}\text{C}$  to  $-80^{\circ}\text{C}$  for 12 months in lyophilized form. After reconstitution, if not intended for use within a month, aliquot and store at  $-80^{\circ}\text{C}$  (Avoid repeated freezing and thawing).

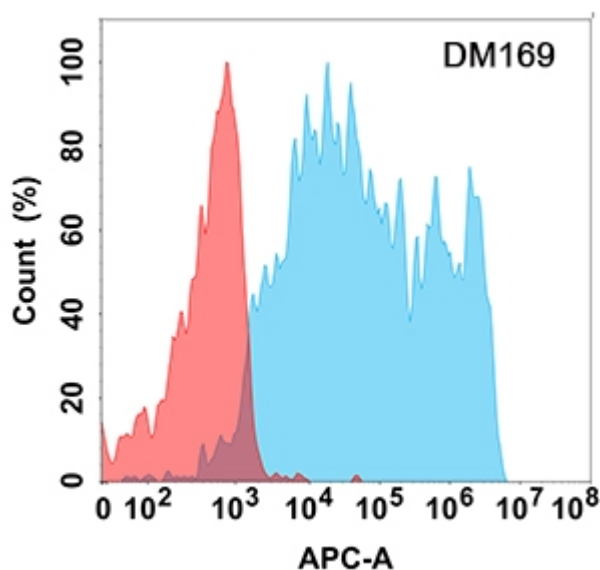


Figure 1. Flow cytometry analysis with Anti-PDL2 (DM169) on Expi293 cells transfected with human PDL2 (Blue histogram) or Expi293 transfected with irrelevant protein (Red histogram)



# Product Description

Pioneering GTPase and Oncogene Product Development since 2010

---