

NOTCH1(M2011R)

NOTCH1(M2011R)

Cat. #: 26444

Size: 100 µL

Gene Symbol: NOTCH1, AOS5, AOVD1, TANI, hNI

Description: Anti-NOTCH1(M2011R) Mouse Monoclonal Antibody

Background: NOTCH1 is a human gene encoding a single-pass transmembrane receptor. It is a member of the NOTCH family. NOTCH family members play a role in a variety of developmental processes by controlling cell fate decisions. Diseases associated with NOTCH1 include aortic valve disease 1 and adams-oliver syndrome 5, and so on. An important paralog of this gene is NOTCH2.

Immunogen: A synthetic peptide from the internal region of NOTCH1 which includes the mutation of M2011R, human origin.

Applications: ELISA, WB, IF, IHC

Recommended Dilutions:

ELISA: 1:1000-1:2000

WB: 1:500-1:1000

IF: 1:50-1:100

IHC: 1:50-1:100

Concentration: 1 mg/ml

Host Species: Mouse

Format: Liquid

Clonality: Monoclonal

Isotype: IgG

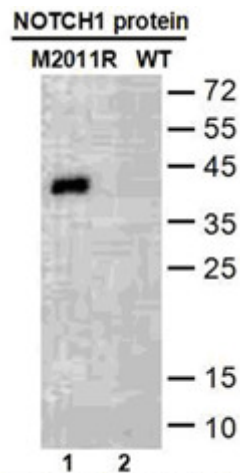
Purity: Purified from ascites

Preservative: No

Constituents: PBS (without Mg²⁺ and Ca²⁺), pH 7.4, 150 mM NaCl, 50% glycerol

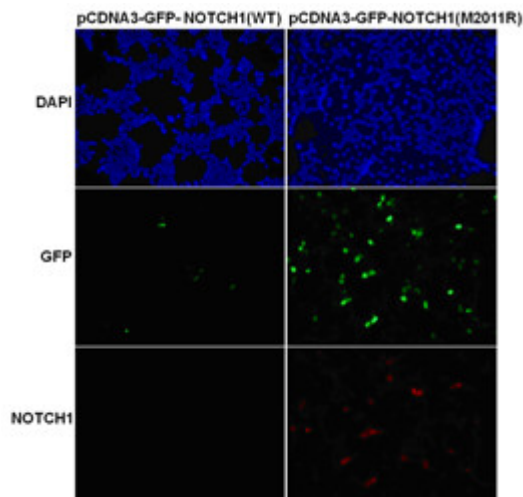
Species Reactivity: Recognizes M2011R mutant, but not wild type NOTCH1 of vertebrates.

Storage Conditions: Store at -20°C. Avoid repeated freezing and thawing



Western blot: WB: anti-NOTCH1 (M2011R) mAb

Western blot analysis of recombinant NOTCH1(M2011R) and wild type proteins. Purified His-tagged NOTCH1(M2011R) protein (lane1) and corresponding wild type protein (lane2) were blotted with Anti-NOTCH1(M2011R) monoclonal antibody (Cat. #26444).



Immunofluorescence:

Immunofluorescence of cells expressing NOTCH1 proteins with Anti-NOTCH1(M2011R) antibody. HEK293T cells were transfected with pCDNA3-GFP-NOTCH1 (WT) plasmid (left column) or pCDNA3-GFP-NOTCH1(M2011R) plasmid (right column), then fixed and stained with Anti-NOTCH1(M2011R) monoclonal antibody (Cat. #26444).