

NFE2L2(L30F)

NFE2L2(L30F)

货号: 26332

基因符号: NFE2L2, NRF2

描述: NFE2L2(L30F) 小鼠单克隆抗体

背景: NFE2L2 protein is encoded by NFE2L2 gene. It is a basic leucine zipper protein that regulates the expression of antioxidant proteins that protect against oxidative damage triggered by injury and inflammation. Several drugs that stimulate the NFE2L2 pathway are being studied for treatment of diseases that are caused by oxidative stress.

免疫原: A synthetic peptide from the internal region of NFE2L2 which includes the mutation of L30F, human origin.

经过测试的应用: ELISA, WB, IHC

推荐稀释度:

ELISA: 1:1000-1:2000

WB: 1:500-1:1000

IHC: 1:50-1:100

浓度: 1 mg/ml

种属反应性: Mouse

形式: Liquid

克隆性: Monoclonal

亚型: IgG

纯化:: Purified from ascites

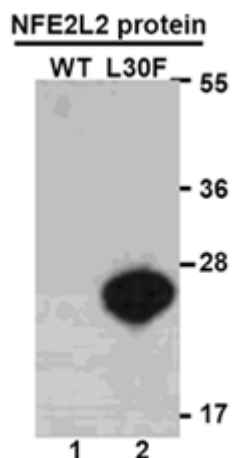
Preservative: No

成分: PBS (without Mg^{2+} and Ca^{2+}), pH 7.4, 150 mM NaCl, 50% glycerol

种属反应性: Recognizes L30F mutant, but not wild type NFE2L2 of vertebrates.

储存条件:: Store at $-20^{\circ}C$. Avoid repeated freezing and thawing

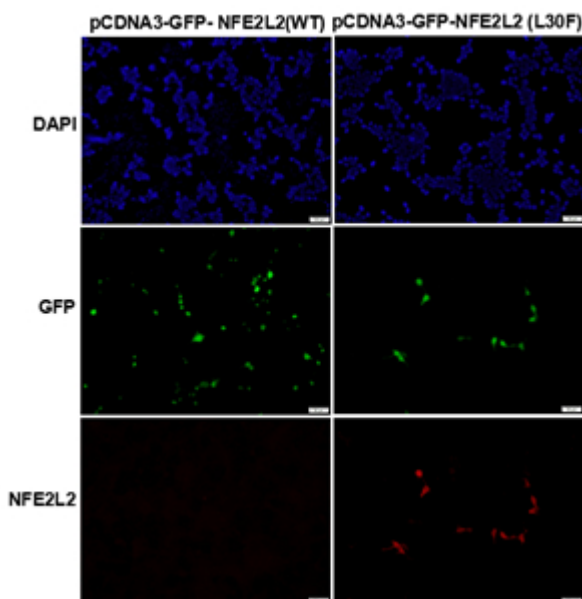
Western blot:



WB: anti-NFE2L2 (L30F) mAb

Western blot analysis of recombinant NFE2L2(L30F) and wild type proteins. Purified His-tagged NFE2L2(L30F) protein (lane2) and corresponding wild type protein (lane1) were blotted with NFE2L2(L30F) monoclonal antibody (货号26332).

Immunofluorescence:



Immunofluorescence of cells expressing NFE2L2 proteins with NFE2L2(L30F) antibody. HEK293T cells were transfected with pCDNA3-GFP-NFE2L2 (WT) plasmid (left column) or pCDNA3-GFP-NFE2L2(L30F) plasmid (right column), then fixed and stained with NFE2L2(L30F) monoclonal antibody (货号26332).