

## MOUSE NCL PROTEIN, HIS TAG

**Cat.#:** 12161

**Product Name:** Mouse NCL Protein

**Size:** 10 µg, 50 µg and 100 µg

**Synonyms:** Nucleolin;Protein C23

**Target:** NCL

**UNIPROT ID:** P09405

**Description:** Recombinant mouse NCL protein with N-terminal 6xHis tag

**Background:** Nucleolin (NCL), a eukaryotic nucleolar phosphoprotein, is involved in the synthesis and maturation of ribosomes. It is located mainly in dense fibrillar regions of the nucleolus. Human NCL gene consists of 14 exons with 13 introns and spans approximately 11kb. The intron 11 of the NCL gene encodes a small nucleolar RNA, termed U20. [provided by RefSeq, Jul 2008]

**Species/Host:** HEK293

**Molecular Weight:** The protein has a predicted molecular mass of 77.4 kDa after removal of the signal peptide. The apparent molecular mass of His-mNCL is approximately 100–130 kDa due to glycosylation.

**Molecular Characterization:** 6×His tag Mouse NCL(Val2–Glu707)

**Purity:** The purity of the protein is greater than 85% as determined by SDS-PAGE and Coomassie blue staining.

**Formulation & Reconstitution:** Lyophilized from nanodisc solubilization buffer (20 mM Tris-HCl, 150 mM NaCl, pH 8.0). Normally 5% – 8% trehalose is added as protectants before lyophilization.

**Storage & Shipping:** Store at -20°C to -80°C for 12 months in lyophilized form. After reconstitution, if not intended for use within a month, aliquot and store at -80°C (Avoid repeated freezing and thawing). Lyophilized proteins are shipped at ambient temperature.

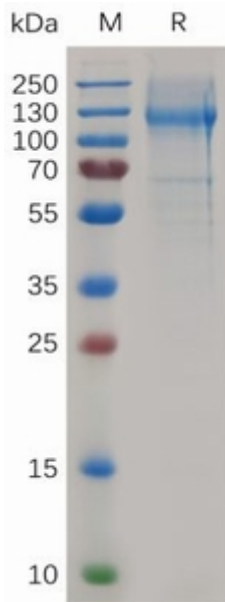


Figure 1. Mouse NCL Protein, His Tag on SDS-PAGE under reducing condition.