

MICB (DM168) RABBIT MAB

目录: 28511

产品名称: MICB(DM168) Rabbit Monoclonal Antibody

基因符号: MIC-B; PERB11.2

描述: MICB antibody(DM168) Rabbit Monoclonal Antibody

背景: This gene encodes a heavily glycosylated protein which is a ligand for the NKG2D type II receptor. Binding of the ligand activates the cytolytic response of natural killer (NK) cells; CD8 alphabeta T cells; and gammadelta T cells which express the receptor. This protein is stress-induced and is similar to MHC class I molecules; however; it does not associate with beta-2-microglobulin or bind peptides. Alternative splicing results in multiple transcript variants.

经过测试的应用: ELISA; Flow Cyt

推荐稀释度: ELISA 1:5000-10000; Flow Cyt 1:100

种属反应性: Rabbit

亚型: Rabbit IgG

纯化: Purified from cell culture supernatant by affinity chromatography

种属反应性: Human MICB

成分: Lyophilized from sterile PBS, pH 7.4. 5 % – 8% trehalose is added as protectants before lyophilization.

储存和运输: Store at -20°C to -80°C for 12 months in lyophilized form. After reconstitution, if not intended for use within a month, aliquot and store at -80°C (Avoid repeated freezing and thawing).

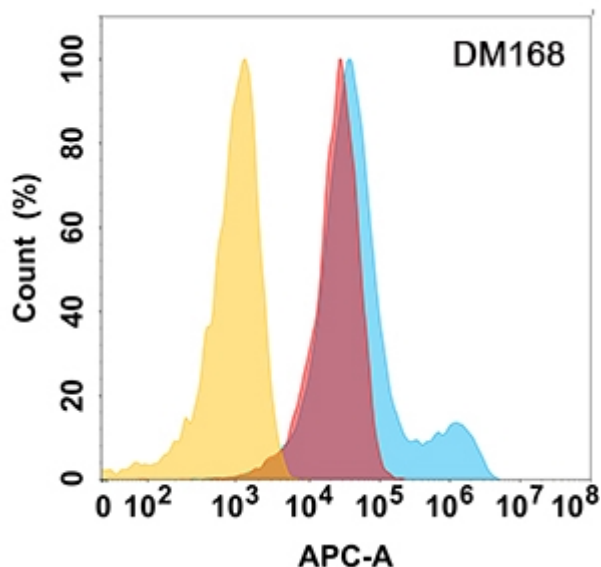


Figure 1. MICB protein is highly expressed on the surface of Expi293 cell membrane. Flow cytometry analysis with MICB (DM168) on Expi293 cells transfected with human MICB (Blue histogram) or Expi293 transfected with irrelevant protein (Red histogram), and Isotype antibody on Expi293 transfected with irrelevant protein (Orange histogram).