

## MESOTHELIN VHH-HUMAN IGG1 FC MAB

**Cat.#:** 28156

**Product Name:** Anti-Mesothelin VHH-Human IgG1 Fc

**Synonyms:** MSLN;MPF

**Description:** Anti-Mesothelin VHH-human IgG1 Fc

**Background:** Research grade biosimilar. Not for use in therapeutic or diagnostic procedures for humans or animals.

**Applications:** ELISA; Flow Cyt

**Recommended Dilutions:** ELISA 1:5000-10000; Flow Cyt 1:100

**Host Species:** Humanized

**Isotype:** IgG1

**Purification:** Purified from cell culture supernatant by affinity chromatography

**Species Reactivity:** Human Mesothelin

**Constituents:** Lyophilized from sterile PBS, pH 7.4. 5% – 8% trehalose is added as protectants before lyophilization.

**Storage & Shipping:** Store at  $-20^{\circ}\text{C}$  to  $-80^{\circ}\text{C}$  for 12 months in lyophilized form. After reconstitution, if not intended for use within a month, aliquot and store at  $-80^{\circ}\text{C}$  (Avoid repeated freezing and thawing).

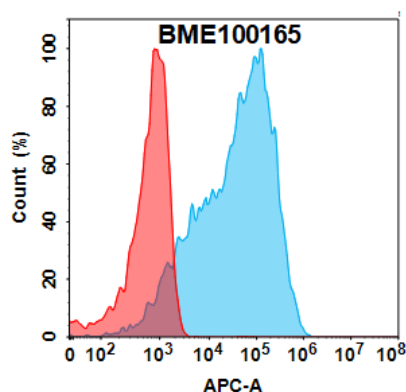


Figure 1. Flow cytometry analysis with  $1\mu\text{g}/\text{mL}$  Anti-Mesothelin VHH-human IgG1 Fc (28156) on Expi293 cells transfected with Human Mesothelin protein (Blue histogram) or Expi293 transfected with irrelevant protein (Red histogram).

**Anti-Mesothelin VHH-human IgG1 Fc ELISA**  
0.2  $\mu\text{g}$  of Human Mesothelin (296-580), mFc-His tagged protein per well

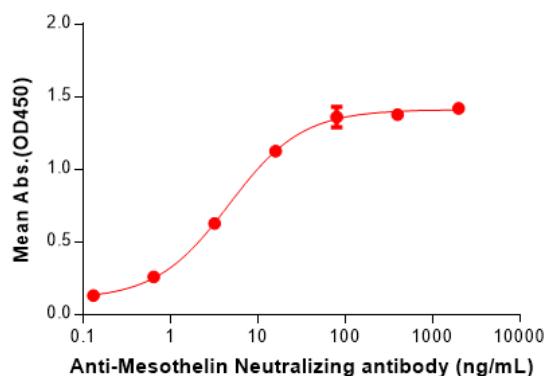


Figure 2. ELISA plate pre-coated by  $2\mu\text{g}/\text{mL}$  ( $100\mu\text{l}/\text{well}$ ) Human Mesothelin (296-580) Protein, mFc-His Tag (11159) can bind Anti-Mesothelin VHH-human IgG1 Fc (28156) in a linear range of 0.64-16  $\text{ng}/\text{mL}$ .