

MESOTHELIN (DM71) RABBIT MAB

目录: 28383

产品名称: Mesothelin(DM71) Rabbit Monoclonal Antibody

基因符号: MSLN; Mesothelin; MPF

描述: mesothelin antibody(DM71) Rabbit Monoclonal Antibody

背景: This gene encodes a preproprotein that is proteolytically processed to generate two protein products; megakaryocyte potentiating factor and mesothelin. Megakaryocyte potentiating factor functions as a cytokine that can stimulate colony formation of bone marrow megakaryocytes. Mesothelin is a glycosylphosphatidylinositol-anchored cell-surface protein that may function as a cell adhesion protein. This protein is overexpressed in epithelial mesotheliomas; ovarian cancers and in specific squamous cell carcinomas. Alternative splicing results in multiple transcript variants; at least one of which encodes an isoform that is proteolytically processed.

经过测试的应用: ELISA; Flow Cyt

推荐稀释度: ELISA 1:5000-10000; Flow Cyt 1:100

种属反应性: Rabbit

亚型: Rabbit IgG

纯化: Purified from cell culture supernatant by affinity chromatography

种属反应性: Human Mesothelin

成分: Lyophilized from sterile PBS, pH 7.4. 5% - 8% trehalose is added as protectants before lyophilization.

储存和运输: Store at -20°C to -80°C for 12 months in lyophilized form. After reconstitution, if not intended for use within a month, aliquot and store at -80°C (Avoid repeated freezing and thawing).

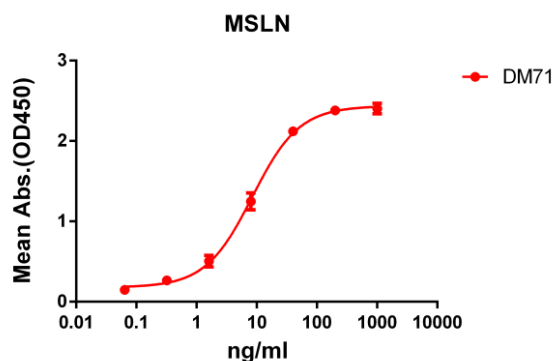


Figure 1. ELISA plate pre-coated by 2 µg/ml (100 µl/well) Human MSLN protein, mFc-His tagged protein 11159 can bind Rabbit MSLN monoclonal antibody (clone: DM71) in a linear range of 1-100 ng/ml.

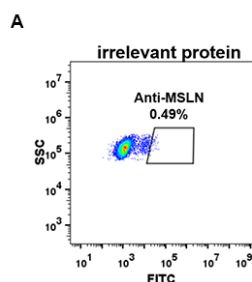


Figure 2. Expi 293 cell line transfected with irrelevant protein (A) and human mesothelin (B) were surface stained with Rabbit MSLN monoclonal antibody 1 µg/ml (clone: DM71) followed by Alexa 488-conjugated rabbit IgG secondary antibody.

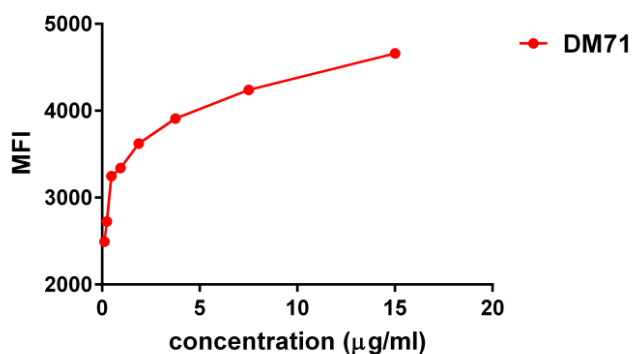


Figure 3. Flow cytometry data of serially titrated Rabbit MSLN monoclonal antibody (clone: DM71) on Hela cells. The Y-axis represents the mean fluorescence intensity (MFI) while the X-axis represents the concentration of IgG used.

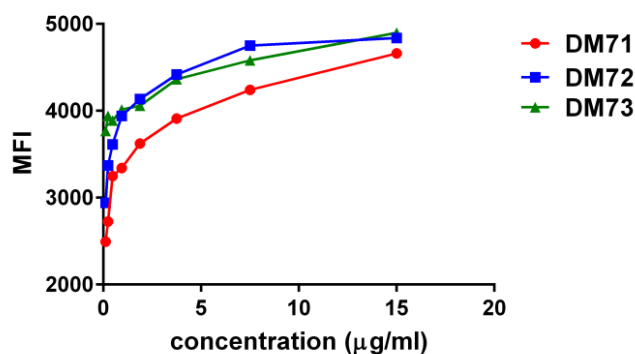


Figure 4. Affinity ranking of different Rabbit MSLN mAb clones by titration of different concentration onto Hela cells. The Y-axis represents the mean fluorescence intensity (MFI) while the X-axis represents the concentration of IgG used.