

MEK1(N382H)**MEK1(N382H)**

货号: 26270

基因符号: MAP2K1; MAPKK1; MEK1; MKK1; PRKMK1

描述: MEK1(N382H) 小鼠单克隆抗体

背景: MEK1 (also known as extracellular signal-regulated kinases, ERKs) plays important role in the MAP kinase cascade, which transduces multiple extracellular signals to control cell growth, proliferation and differentiation. Activated upon growth factors stimulation, MEK1 phosphorylates MAPK3/ERK1 and MAPK1/ERK2, thus activates the MAP pathway and regulates transcription. Abnormal of the MEK1 protein, including point mutations, are implicated in diseases such as cardiofaciocutaneous syndrome (CFC) and melanoma.

免疫原: A synthetic peptide from the internal region of MEK1 which includes the mutation of N382H, human origin.

经过测试的应用: ELISA, WB, IHC

推荐稀释度:

ELISA: 1:1000-1:5000

WB: 1:500-1:1000

IHC: 1:50-1:100

浓度: 1 mg/ml

种属反应性: Mouse

形式: Liquid

克隆性: Monoclonal

亚型: IgG

纯化:: Purified from ascites

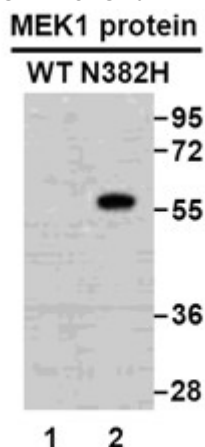
Preservative: No

成分: PBS (without Mg^{2+} and Ca^{2+}), pH 7.4, 150 mM NaCl, 50% glycerol

种属反应性: Recognizes N382H mutant, but not wild type MEK1 of vertebrates.

储存条件:: Store at $-20^{\circ}C$. Avoid repeated freezing and thawing

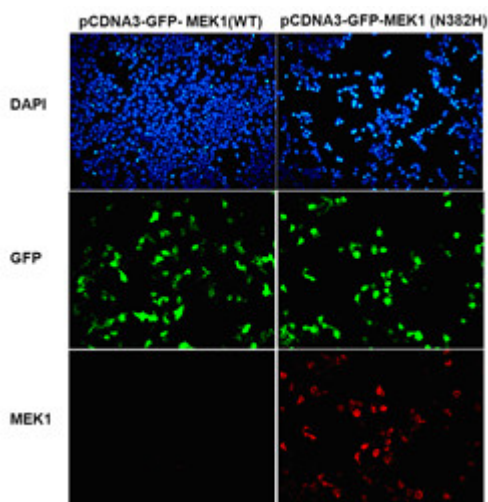
Western blot:



WB: Anti- MEK1 (N382H) mAb

Western blot analysis of recombinant MEK1(N382H) and wild type proteins. Purified His-tagged MEK1(N382H) protein (lane 2) and corresponding wild type protein (lane 1) were blotted with MEK1(N382H) monoclonal antibody (货号26270).

Immunofluorescence:



Immunofluorescence of cells expressing MEK1 proteins with MEK1(N382H) antibody. HEK293T cells were transfected with pCDNA3-GFP-MEK1 (WT) plasmid (left column) or pCDNA3-GFP-MEK1(N382H) plasmid (right column), then fixed and stained with MEK1(N382H) monoclonal antibody (货号26270).