

## M-CSF (DMC437) IGG1 CHIMERIC MAB

**Cat.#:** 28225

**Product Name:** Anti-M-CSF(DMC437) IgG1 Chimeric Monoclonal Antibody

**Synonyms:** CSF-1; MCSF

**Description:** Anti-M-CSF antibody(DMC437) IgG1 Chimeric Monoclonal Antibody

**Background:** The protein encoded by this gene is a cytokine that controls the production; differentiation; and function of macrophages. The active form of the protein is found extracellularly as a disulfide-linked homodimer; and is thought to be produced by proteolytic cleavage of membrane-bound precursors. The encoded protein may be involved in development of the placenta. Alternate splicing results in multiple transcript variants.

**Applications:** Flow Cyt

**Recommended Dilutions:** Flow Cyt 1:100

**Host Species:** Rabbit

**Isotype:** Rabbit:Human Fc chimeric IgG1

**Purification:** Purified from cell culture supernatant by affinity chromatography

**Species Reactivity:** Human M-CSF

**Constituents:** Lyophilized from sterile PBS, pH 7.4. 5 % – 8% trehalose is added as protectants before lyophilization.

**Storage & Shipping:** Store at -20°C to -80°C for 12 months in lyophilized form. After reconstitution, if not intended for use within a month, aliquot and store at -80°C (Avoid repeated freezing and thawing).

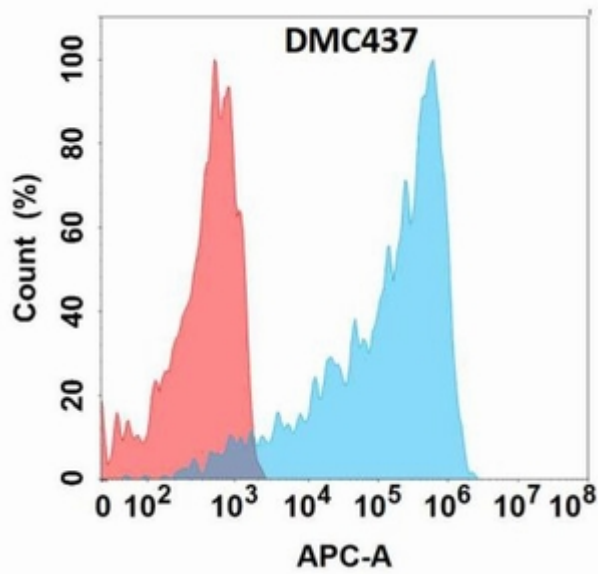


Figure 1. Flow cytometry analysis with Anti-M-CSF (DMC437) on Expi293 cells transfected with human M-CSF (Blue histogram) or Expi293 transfected with irrelevant protein (Red histogram).