

CLEC4C MAB (LITIFILIMAB)

目录: 28147

产品名称: CLEC4C (Litifilimab) Monoclonal Antibody

基因符号: BDCA-2;CD303

描述: CLEC4C (litifilimab) Monoclonal Antibody

背景: Research grade biosimilar. Not for use in therapeutic or diagnostic procedures for humans or animals.

经过测试的应用: ELISA; Flow Cyt

推荐稀释度: ELISA 1:5000-10000; Flow Cyt 1:100

种属反应性: Humanized

亚型: IgG1(E239D, M241L)

纯化: Purified from cell culture supernatant by affinity chromatography

种属反应性: Human CLEC4C

成分: Lyophilized from sterile PBS, pH 7.4. 5 % – 8% trehalose is added as protectants before lyophilization.

储存和运输: Store at -20°C to -80°C for 12 months in lyophilized form. After reconstitution, if not intended for use within a month, aliquot and store at -80°C (Avoid repeated freezing and thawing).

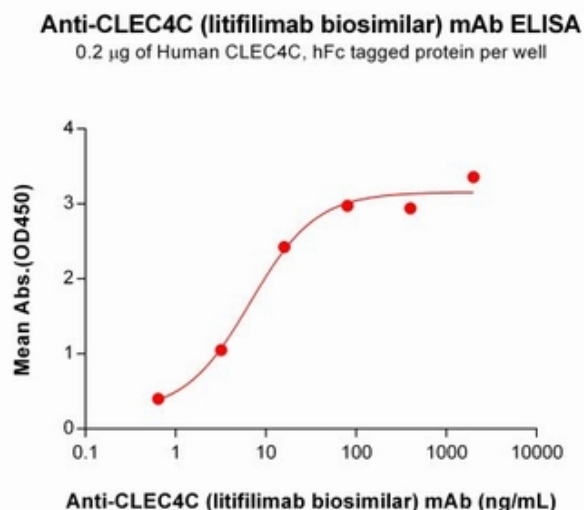


Figure 1. ELISA plate pre-coated by 2 $\mu\text{g}/\text{mL}$ (100 $\mu\text{l}/\text{well}$) Human CLEC4C Protein, hFc Tag (11544) can bind CLEC4C (litifilimab biosimilar) mAb (28147) in a linear range of 0.64–80.00 ng/mL. In order to specifically detect 28147, mouse human Fab-specific antibody was used as detection antibody.

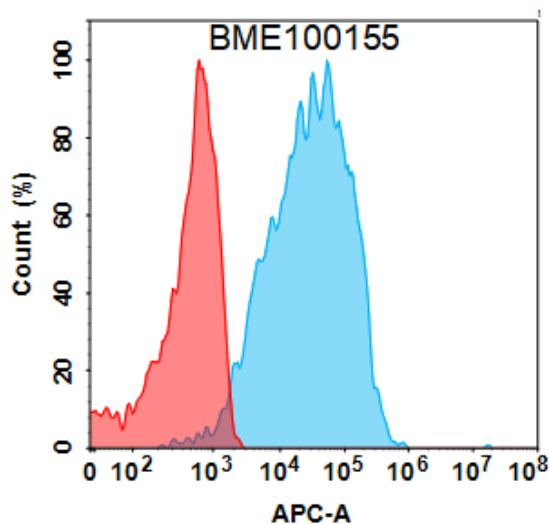


Figure 2. Flow cytometry analysis with 1 $\mu\text{g}/\text{mL}$ CLEC4C (litifilimab biosimilar) mAb (28147) on Expi293 cells transfected with Human CLEC4C protein (Blue histogram) or Expi293 transfected with irrelevant protein (Red histogram).

