

## LILRB2 (DMC496) IGG1 CHIMERIC MAB

**Cat.#:** 28269

**Product Name:** Anti-LILRB2(DMC496) IgG1 Chimeric Monoclonal Antibody

**Synonyms:** LIR-2; ILT-4; MIR-10; CD85d

**Description:** Anti-LILRB2 antibody(DMC496) IgG1 Chimeric Monoclonal Antibody

**Background:** This gene is a member of the leukocyte immunoglobulin-like receptor (LIR) family; which is found in a gene cluster at chromosomal region 19q13.4. The encoded protein belongs to the subfamily B class of LIR receptors which contain two or four extracellular immunoglobulin domains; a transmembrane domain; and two to four cytoplasmic immunoreceptor tyrosine-based inhibitory motifs (ITIMs). The receptor is expressed on immune cells where it binds to MHC class I molecules on antigen-presenting cells and transduces a negative signal that inhibits stimulation of an immune response. It is thought to control inflammatory responses and cytotoxicity to help focus the immune response and limit autoreactivity. Multiple transcript variants encoding different isoforms have been found for this gene. [provided by RefSeq; Jul 2008]

**Applications:** Flow Cyt

**Recommended Dilutions:** Flow Cyt 1:100

**Host Species:** Rabbit

**Isotype:** Rabbit:Human Fc chimeric IgG1

**Purification:** Purified from cell culture supernatant by affinity chromatography

**Species Reactivity:** Human LILRB2

**Constituents:** Lyophilized from sterile PBS, pH 7.4. 5 % – 8% trehalose is added as protectants before lyophilization.

**Storage & Shipping:** Store at -20°C to -80°C for 12 months in lyophilized form. After reconstitution, if not intended for use within a month, aliquot and store at -80°C (Avoid repeated freezing and thawing).

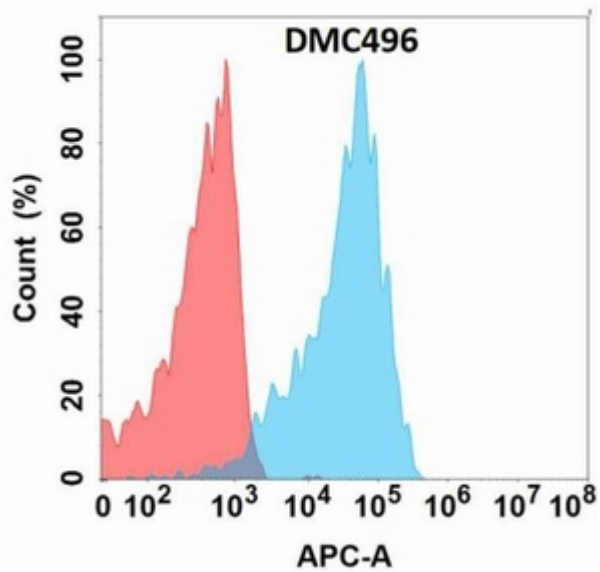


Figure 1. Flow cytometry analysis with Anti-LILRB2 (DMC496) on Expi293 cells transfected with human LILRB2 (Blue histogram) or Expi293 transfected with irrelevant protein (Red histogram).