

M-CSF MAB (LACNOTUZUMAB)

目录: 28104

产品名称: M-CSF(Lacnotuzumab) Monoclonal Antibody

基因符号: CSF-1;MCSF

描述: M-CSF(lacnotuzumab) Monoclonal Antibody

背景: Research grade biosimilar. Not for use in therapeutic or diagnostic procedures for humans or animals.

经过测试的应用: ELISA; Flow Cyt

推荐稀释度: ELISA 1:5000-10000; Flow Cyt 1:100

种属反应性: Humanized

亚型: IgG1

纯化: Purified from cell culture supernatant by affinity chromatography

种属反应性: Human M-CSF

成分: Lyophilized from sterile PBS, pH 7.4. 5 % – 8% trehalose is added as protectants before lyophilization.

储存和运输: Store at -20°C to -80°C for 12 months in lyophilized form. After reconstitution, if not intended for use within a month, aliquot and store at -80°C (Avoid repeated freezing and thawing).

Anti-M-CSF (lacnotuzumab biosimilar) mAb ELISA

0.2 µg of Human M-CSF, His tagged protein per well

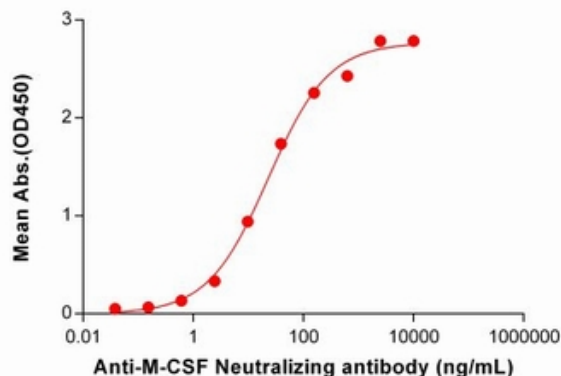


Figure 1. ELISA plate pre-coated by 2 µg/mL (100 µl/well) Human M-CSF Protein, His Tag 11369 can bind M-CSF Neutralizing antibody (28104) in a linear range of 2.44-156.25 ng/mL.

Anti-M-CSF (lacnotuzumab biosimilar) mAb ELISA

0.2 µg of Human M-CSF, hFc tagged protein per well

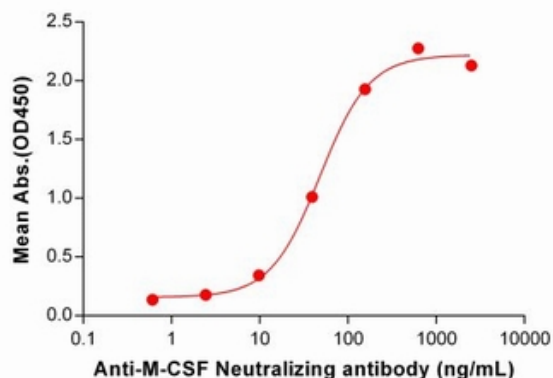


Figure 2. ELISA plate pre-coated by 2 µg/mL (100 µl/well) Human M-CSF Protein, hFc Tag (11350) can bind M-CSF Neutralizing antibody (28104) in a linear range of 9.77-156.25 ng/mL. In order to specifically detect 28104, mouse human Fab-specific antibody was used as detection antibody.

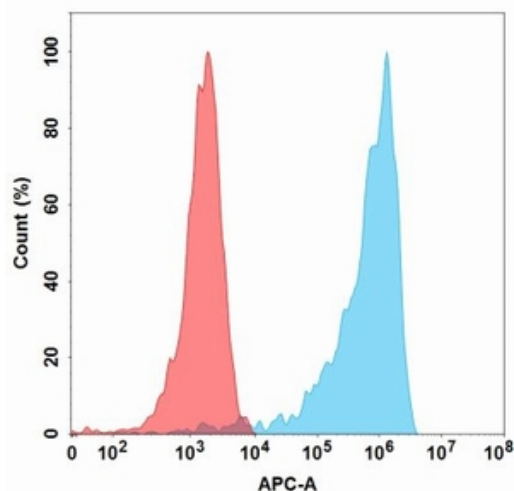


Figure 3. Flow cytometry analysis with 1 µg/mL M-CSF (lacnotuzumab biosimilar) mAb (28104) on Expi293 cells transfected with Human M-CSF protein (Blue histogram) or Expi293 transfected with irrelevant protein (Red histogram).