

## GYCY2C MAB (INDUSATUMAB)

目录: 28073

产品名称: GUCY2C(Indusatumab) Monoclonal Antibody

基因符号: DIAR6;GC-C;GUC2C;MEC1L;MUC1L;STAR

描述: GUCY2C(indusatumab ) Monoclonal Antibody

背景: Research grade biosimilar. Not for use in therapeutic or diagnostic procedures for humans or animals.

经过测试的应用: ELISA; Flow Cyt

推荐稀释度: ELISA 1:5000-10000; Flow Cyt 1:100

种属反应性: Homo sapiens

亚型: IgG1

纯化: Purified from cell culture supernatant by affinity chromatography

种属反应性: Human GUCY2C

成分: Lyophilized from sterile PBS, pH 7.4. 5 % – 8 % trehalose is added as protectants before lyophilization.

储存和运输: Store at -20°C to -80°C for 12 months in lyophilized form. After reconstitution, if not intended for use within a month, aliquot and store at -80°C (Avoid repeated freezing and thawing).

**Anti-GUCY2C (indusatumab biosimilar) mAb ELISA**  
0.1 µg of Human GUCY2C, His tagged protein per well

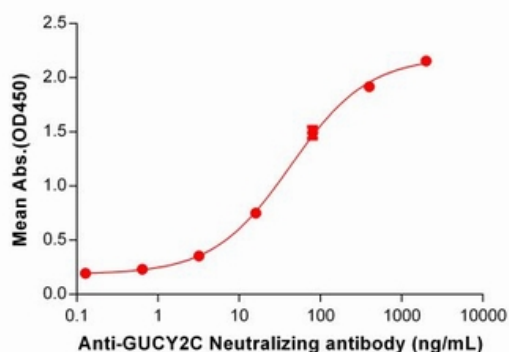


Figure 1. ELISA plate pre-coated by 1 µg/mL (100 µl/well) Human GUCY2C protein, His Tag 11252 can bind GUCY2C Neutralizing antibody (28073) in a linear range of 3.2-400 ng/mL.

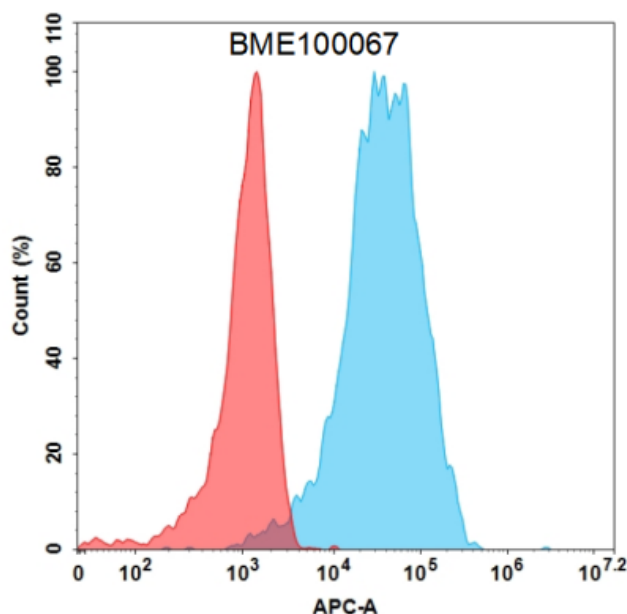


Figure 2. Flow cytometry analysis with GUCY2C(indusatumab biosimilar) mAb 1 µg/mL on Expi293 cells transfected with Human GUCY2C (Blue histogram) or Expi293 transfected with irrelevant protein (Red histogram).