

CLDN6 MAB (IMAB027 MAB)

Cat.#: 28085

Product Name: Anti-CLDN6 (IMAB027) Monoclonal Antibody

Synonyms: Claudin 6;Claudin-6;Skullin

Description: Anti-CLDN6 (IMAB027) Monoclonal Antibody

Background: Research grade biosimilar. Not for use in therapeutic or diagnostic procedures for humans or animals.

Applications: ELISA; Flow Cyt

Recommended Dilutions: ELISA 1:5000-10000; Flow Cyt 1:100

Host Species: Humanized

Isotype: IgG1

Purification: Purified from cell culture supernatant by affinity chromatography

Species Reactivity: Human CLDN6

Constituents: Lyophilized from sterile PBS, pH 7.4. 5% – 8% trehalose is added as protectants before lyophilization.

Storage & Shipping: Store at -20°C to -80°C for 12 months in lyophilized form. After reconstitution, if not intended for use within a month, aliquot and store at -80°C (Avoid repeated freezing and thawing).

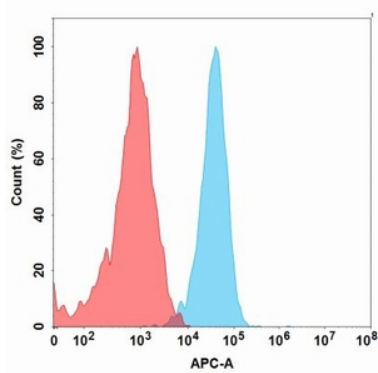


Figure 1. Flow cytometry analysis with 1 μ g/mL Anti-CLDN6 (IMAB027) mAb (28085) on Expi293 cells transfected with Human CLDN6 protein (Blue histogram) or Expi293 transfected with irrelevant protein (Red histogram).

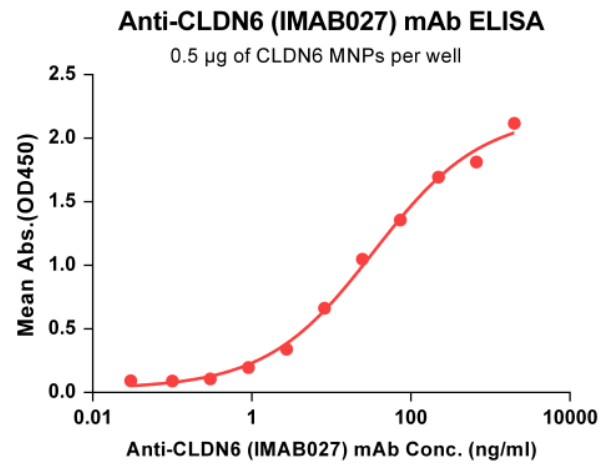


Figure 2. ELISA plates were pre-coated with 0.5 μ g/per well purified human CLDN6 MNPs. Serial diluted Anti-CLDN6 monoclonal antibody (28085) solutions were added, washed, and incubated with secondary antibody before ELISA reading. From above data, the EC50 for 28085 binding with Claudin6 MNPs is 34.36 ng/ml.

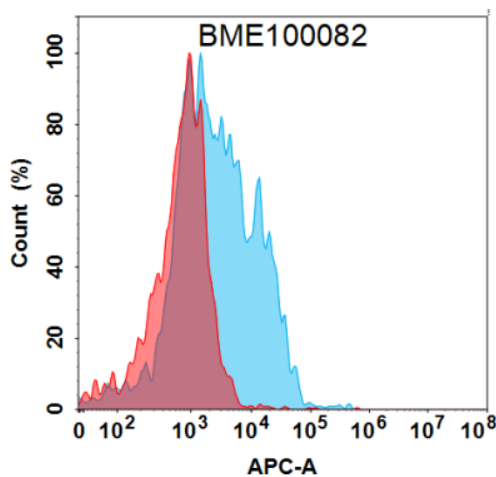


Figure 3. Flow cytometry analysis with 15 μ g/mL Anti-CLDN6 (IMAB027) mAb (28085) on Expi293 cells transfected with Human CLDN9 protein (Blue histogram) or Expi293 transfected with irrelevant protein (Red histogram).