

## IL5RA (DMC393) IGG1 CHIMERIC MAB

**Cat.#:** 28211

**Product Name:** Anti-IL5RA(DMC393) IgG1 Chimeric Monoclonal Antibody

**Synonyms:** IL5Ra;CD125;IL-5 R alpha

**Description:** Anti-IL5RA antibody(DMC393) IgG1 Chimeric Monoclonal Antibody

**Background:** The protein encoded by this gene is an interleukin 5 specific subunit of a heterodimeric cytokine receptor. The receptor is comprised of a ligand specific alpha subunit and a signal transducing beta subunit shared by the receptors for interleukin 3 (IL3); colony stimulating factor 2 (CSF2:GM-CSF); and interleukin 5 (IL5). The binding of this protein to IL5 depends on the beta subunit. The beta subunit is activated by the ligand binding; and is required for the biological activities of IL5. This protein has been found to interact with syndecan binding protein (syntenin); which is required for IL5 mediated activation of the transcription factor SOX4. Several alternatively spliced transcript variants encoding four distinct isoforms have been reported.

**Applications:** Flow Cyt

**Recommended Dilutions:** Flow Cyt 1:100

**Host Species:** Rabbit

**Isotype:** Rabbit:Human Fc chimeric IgG1

**Purification:** Purified from cell culture supernatant by affinity chromatography

**Species Reactivity:** Human IL5RA

**Constituents:** Lyophilized from sterile PBS, pH 7.4. 5 % – 8% trehalose is added as protectants before lyophilization.

**Storage & Shipping:** Store at -20°C to -80°C for 12 months in lyophilized form. After reconstitution, if not intended for use within a month, aliquot and store at -80°C (Avoid repeated freezing and thawing).

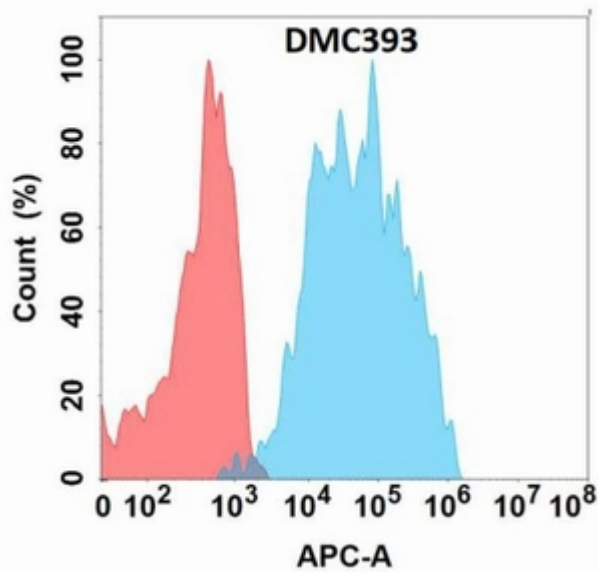


Figure 1. Flow cytometry analysis with Anti-IL5RA (DMC393) on Expi293 cells transfected with human IL5RA (Blue histogram) or Expi293 transfected with irrelevant protein (Red histogram).