

IL2RA (DM148) RABBIT MAB

目录: 28492

产品名称: IL2RA(DM148) Rabbit Monoclonal Antibody

基因符号: IL2RA;CD25;p55;IL2-RA;IL-2-RA

描述: IL2RA antibody(DM148) Rabbit Monoclonal Antibody

背景: The interleukin 2 (IL2) receptor alpha (IL2RA) and beta (IL2RB) chains; together with the common gamma chain (IL2RG); constitute the high-affinity IL2 receptor. Homodimeric alpha chains (IL2RA) result in low-affinity receptor; while homodimeric beta (IL2RB) chains produce a medium-affinity receptor. Normally an integral-membrane protein; soluble IL2RA has been isolated and determined to result from extracellular proteolysis. Alternately-spliced IL2RA mRNAs have been isolated; but the significance of each is presently unknown. Mutations in this gene are associated with interleukin 2 receptor alpha deficiency.

经过测试的应用: ELISA; Flow Cyt

推荐稀释度: ELISA 1:5000-10000; Flow Cyt 1:100

种属反应性: Rabbit

亚型: Rabbit IgG

纯化: Purified from cell culture supernatant by affinity chromatography

种属反应性: Human IL2RA

成分: Lyophilized from sterile PBS, pH 7.4. 5 % - 8 % trehalose is added as protectants before lyophilization.

储存和运输: Store at -20°C to -80°C for 12 months in lyophilized form. After reconstitution, if not intended for use within a month, aliquot and store at -80°C (Avoid repeated freezing and thawing).

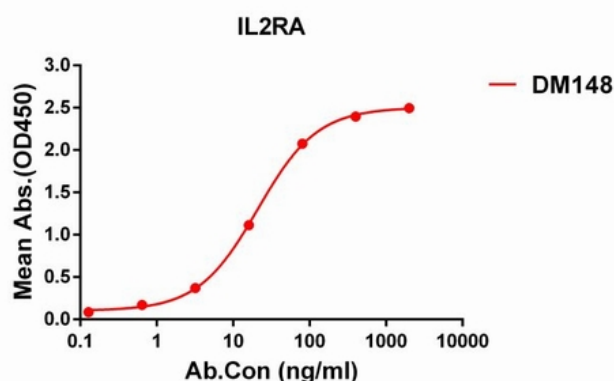


Figure 1. ELISA plate pre-coated by 1 µg/ml (100 µl/well) Human IL2RA protein, His tagged protein 11217 can bind Rabbit IL2RA monoclonal antibody (clone: DM148) in a linear range of 5-100 ng/ml.

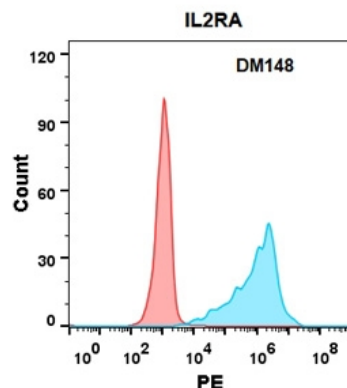


Figure 2. Flow cytometry analysis with IL2RA (DM148) on Expi293 cells transfected with human IL2RA (Blue histogram) or Expi293 transfected with irrelevant protein (Red histogram).