

IL1B (DMC271) IGG1 CHIMERIC MAB

Cat.#: 28179

Product Name: Anti-IL1B(DMC271) IgG1 Chimeric Monoclonal Antibody

Synonyms: IL-1; IL1-BETA; IL1F2

Description: Anti-IL1B antibody(DMC271) IgG1 Chimeric Monoclonal Antibody

Background: The protein encoded by this gene is a member of the interleukin 1 cytokine family. This cytokine is produced by activated macrophages as a proprotein; which is proteolytically processed to its active form by caspase 1 (CASP1:ICE). This cytokine is an important mediator of the inflammatory response; and is involved in a variety of cellular activities; including cell proliferation; differentiation; and apoptosis. The induction of cyclooxygenase-2 (PTGS2:COX2) by this cytokine in the central nervous system (CNS) is found to contribute to inflammatory pain hypersensitivity. Similarly; IL-1B has been implicated in human osteoarthritis pathogenesis. Patients with severe Coronavirus Disease 2019 (COVID-19) present elevated levels of pro-inflammatory cytokines such as IL-1B in bronchial alveolar lavage fluid samples. The lung damage induced by the Severe acute respiratory syndrome coronavirus 2 (SARS-CoV-2) is to a large extent; a result of the inflammatory response promoted by cytokines such as IL-1B. This gene and eight other interleukin 1 family genes form a cytokine gene cluster on chromosome 2.

Applications: Flow Cyt

Recommended Dilutions: Flow Cyt 1:100

Host Species: Rabbit

Isotype: Rabbit:Human Fc chimeric IgG1

Purification: Purified from cell culture supernatant by affinity chromatography

Species Reactivity: Human IL1B

Constituents: Lyophilized from sterile PBS, pH 7.4. 5 % – 8% trehalose is added as protectants before lyophilization.

Storage & Shipping: Store at -20°C to -80°C for 12 months in lyophilized form. After reconstitution, if not intended for use within a month, aliquot and store at -80°C (Avoid repeated freezing and thawing).

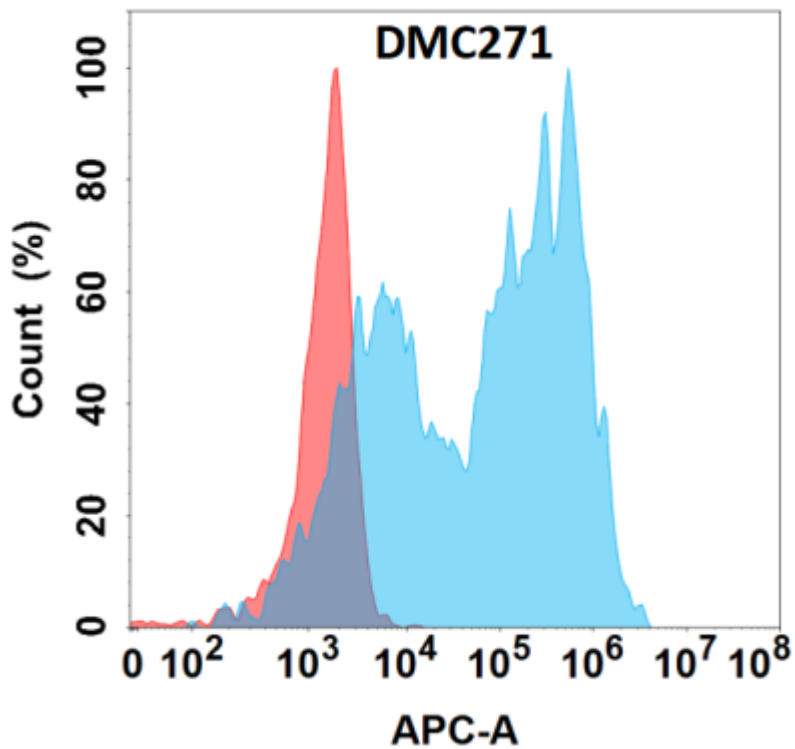


Figure 1. Flow cytometry analysis with Anti-IL1B (DMC271) on Expi293 cells transfected with human IL1B (Blue histogram) or Expi293 transfected with irrelevant protein (Red histogram).