

## IL18RA (DM218) RABBIT MAB

**Cat.#:** 28560

**Product Name:** Anti-IL18RA(DM218) Rabbit Monoclonal Antibody

**Synonyms:** CD218a; CDw218a; IL-1Rrp; IL1RRP; IL18RA

**Description:** Anti-IL18RA antibody(DM218) Rabbit Monoclonal Antibody

**Background:** The protein encoded by this gene is a cytokine receptor that belongs to the interleukin 1 receptor family. This receptor specifically binds interleukin 18 (IL18); and is essential for IL18 mediated signal transduction. IFN-alpha and IL12 are reported to induce the expression of this receptor in NK and T cells. This gene along with four other members of the interleukin 1 receptor family; including IL1R2; IL1R1; IL1RL2 (IL-1Rrp2); and IL1RL1 (T1:ST2); form a gene cluster on chromosome 2q. Alternatively spliced transcript variants encoding different isoforms have been found for this gene.

**Applications:** ELISA; Flow Cyt

**Recommended Dilutions:** ELISA 1:5000-10000; Flow Cyt 1:100

**Host Species:** Rabbit

**Isotype:** Rabbit IgG

**Purification:** Purified from cell culture supernatant by affinity chromatography

**Species Reactivity:** Human IL18RA

**Constituents:** Lyophilized from sterile PBS, pH 7.4. 5 % - 8% trehalose is added as protectants before lyophilization.

**Storage & Shipping:** Store at -20°C to -80°C for 12 months in lyophilized form. After reconstitution, if not intended for use within a month, aliquot and store at -80°C (Avoid repeated freezing and thawing).

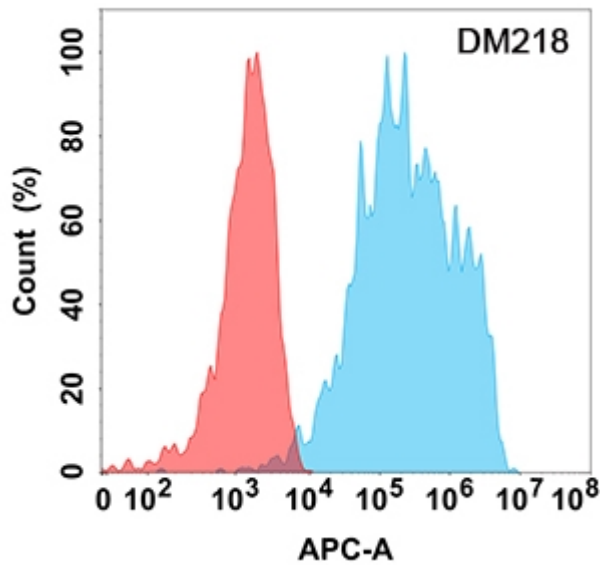


Figure 1. Flow cytometry analysis with Anti-IL18RA (DM218) on Expi293 cells transfected with human IL18RA (Blue histogram) or Expi293 transfected with irrelevant protein (Red histogram).