

IL15RA (DM206) RABBIT MAB

目录: 28549

产品名称: IL15RA(DM206) Rabbit Monoclonal Antibody

基因符号: CD215

描述: IL15RA antibody(DM206) Rabbit Monoclonal Antibody

背景: This gene encodes a cytokine receptor that specifically binds interleukin 15 (IL15) with high affinity. The receptors of IL15 and IL2 share two subunits; IL2R beta and IL2R gamma. This forms the basis of many overlapping biological activities of IL15 and IL2. The protein encoded by this gene is structurally related to IL2R alpha; an additional IL2-specific alpha subunit necessary for high affinity IL2 binding. Unlike IL2RA; IL15RA is capable of binding IL15 with high affinity independent of other subunits; which suggests distinct roles between IL15 and IL2. This receptor is reported to enhance cell proliferation and expression of apoptosis inhibitor BCL2L1:BCL2-XL and BCL2. Multiple alternatively spliced transcript variants of this gene have been reported.

经过测试的应用: ELISA; Flow Cyt

推荐稀释度: ELISA 1:5000-10000; Flow Cyt 1:100

种属反应性: Rabbit

亚型: Rabbit IgG

纯化: Purified from cell culture supernatant by affinity chromatography

种属反应性: Human IL15RA

成分: Lyophilized from sterile PBS, pH 7.4. 5 % – 8% trehalose is added as protectants before lyophilization.

储存和运输: Store at -20°C to -80°C for 12 months in lyophilized form.

After reconstitution, if not intended for use within a month, aliquot and store at -80°C (Avoid repeated freezing and thawing).

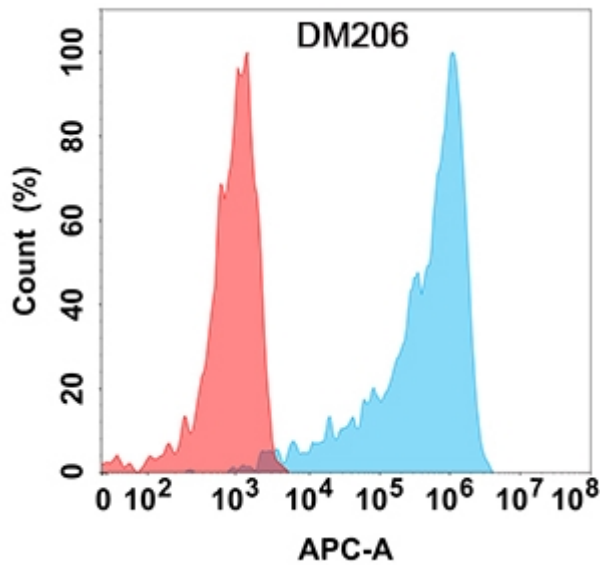


Figure 1. Flow cytometry analysis with IL15RA (DM206) on Expi293 cells transfected with human IL15RA (Blue histogram) or Expi293 transfected with irrelevant protein (Red histogram).