

IL11RA (DMC282) IGG1 CHIMERIC MAB

目录: 28190

产品名称: IL11RA(DMC282) IgG1 Chimeric Monoclonal Antibody

基因符号: IL-11 R alpha;IL-11 RA;IL11RA;Interleukin-11 receptor subunit alpha;IL-11 receptor subunit alpha;IL-11R subunit alpha;IL-11R-alpha

描述: IL11RA antibody(DMC282) IgG1 Chimeric Monoclonal Antibody

背景: Interleukin 11 is a stromal cell-derived cytokine that belongs to a family of pleiotropic and redundant cytokines that use the gp130 transducing subunit in their high affinity receptors. This gene encodes the IL-11 receptor; which is a member of the hematopoietic cytokine receptor family. This particular receptor is very similar to ciliary neurotrophic factor; since both contain an extracellular region with a 2-domain structure composed of an immunoglobulin-like domain and a cytokine receptor-like domain. Multiple alternatively spliced transcript variants have been found for this gene.

经过测试的应用: Flow Cyt

推荐稀释度: Flow Cyt 1:100

种属反应性: Rabbit

亚型: Rabbit:Human Fc chimeric IgG1

纯化: Purified from cell culture supernatant by affinity chromatography

种属反应性: Human IL11RA

成分: Lyophilized from sterile PBS, pH 7.4. 5 % – 8% trehalose is added as protectants before lyophilization.

储存和运输: Store at -20°C to -80°C for 12 months in lyophilized form. After reconstitution, if not intended for use within a month, aliquot and store at -80°C (Avoid repeated freezing and thawing).

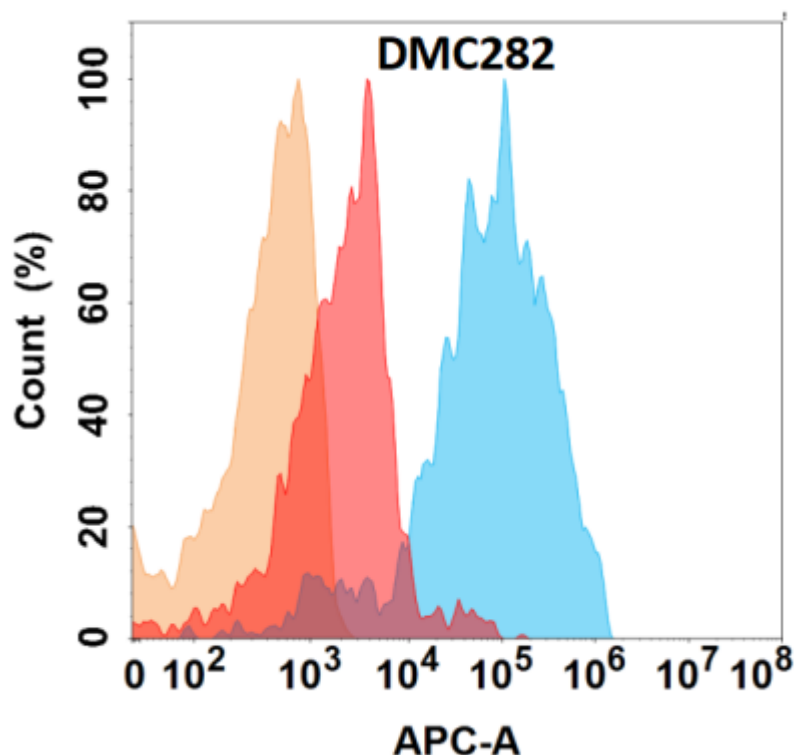


Figure 1. IL11RA protein is highly expressed on the surface of Expi293 cell membrane. Flow cytometry analysis with IL11RA (DMC282) on Expi293 cells transfected with human IL11RA (Blue histogram) or Expi293 transfected with irrelevant protein (Red histogram), and Isotype antibody on Expi293 transfected with irrelevant protein (Orange histogram).