

## **IGFBP7 (DMC422) IGG1 CHIMERIC MAB**

目录: 28216

产品名称: IGFBP7(DMC422) IgG1 Chimeric Monoclonal Antibody

基因符号: IBP-7; TAF; IGFBP-rPI; MAC25 protein

描述: IGFBP7 antibody(DMC422) IgG1 Chimeric Monoclonal Antibody

背景: This gene encodes a member of the insulin-like growth factor (IGF)-binding protein (IGFBP) family. IGFBPs bind IGFs with high affinity; and regulate IGF availability in body fluids and tissues and modulate IGF binding to its receptors. This protein binds IGF-I and IGF-II with relatively low affinity; and belongs to a subfamily of low-affinity IGFBPs. It also stimulates prostacyclin production and cell adhesion. Alternatively spliced transcript variants encoding different isoforms have been described for this gene; and one variant has been associated with retinal arterial macroaneurysm (PMID:21835307).

经过测试的应用: Flow Cyt

推荐稀释度: Flow Cyt 1:100

种属反应性: Rabbit

亚型: Rabbit:Human Fc chimeric IgG1

纯化: Purified from cell culture supernatant by affinity chromatography

种属反应性: Human IGFBP7

成分: Lyophilized from sterile PBS, pH 7.4. 5 % – 8% trehalose is added as protectants before lyophilization.

储存和运输: Store at -20°C to -80°C for 12 months in lyophilized form.

After reconstitution, if not intended for use within a month, aliquot and store at -80°C (Avoid repeated freezing and thawing).

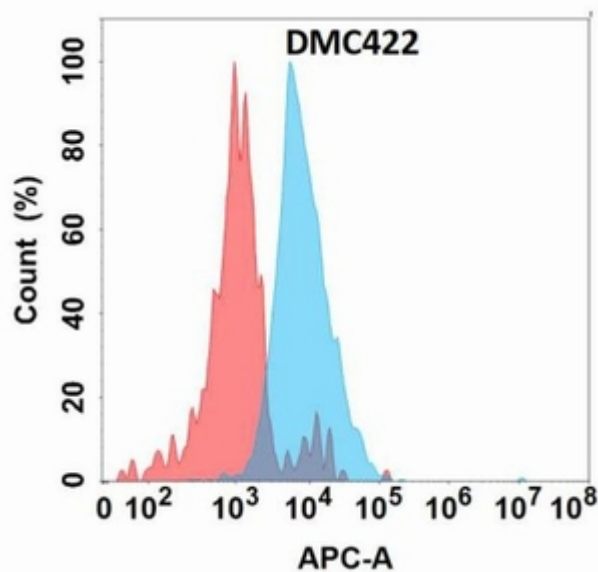


Figure 1. Flow cytometry analysis with IGFBP7 (DMC422) on Expi293 cells transfected with human IGFBP7 (Blue histogram) or Expi293 transfected with irrelevant protein (Red histogram).