

HUMAN SLAMF1 PROTEIN, MFC-HIS TAG

Cat.#: 11152

Product Name: Human SLAMF1 Protein

Size: 10 µg, 50 µg and 100 µg

Synonyms: SLAMF1;CD150;CDw150;SLAM;IPO-3

Target: SLAMF1

UNIPROT ID: Q13291

Description: Recombinant human SLAMF1 protein with C-terminal mouse Fc and 6xHis tag

Background: SLAMF1 (Signaling Lymphocytic Activation Molecule Family Member 1) is a Protein Coding gene. Diseases associated with SLAMF1 include Measles and Subacute Sclerosing Panencephalitis. Among its related pathways are Dendritic Cells Developmental Lineage Pathway and T Cell Co-Signaling Pathway: Ligand-Receptor Interactions. Gene Ontology (GO) annotations related to this gene include antigen binding. An important paralog of this gene is LY9.

Species/Host: HEK293

Molecular Weight: The protein has a predicted molecular mass of 51.8 kDa after removal of the signal peptide.

Molecular Characterization: SLAMF1(Ala21-Pro231) mFc(Pro99-Lys330) 6xHis tag

Purity: The purity of the protein is greater than 95% as determined by SDS-PAGE and Coomassie blue staining.

Formulation & Reconstitution: Lyophilized from nanodisc solubilization buffer (20 mM Tris-HCl, 150 mM NaCl, pH 8.0). Normally 5% – 8% trehalose is added as protectants before lyophilization.

Storage & Shipping: Store at -20°C to -80°C for 12 months in lyophilized form. After reconstitution, if not intended for use within a month, aliquot and store at -80°C (Avoid repeated freezing and thawing). Lyophilized proteins are shipped at ambient temperature.

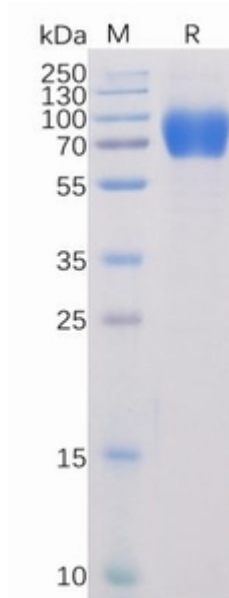


Figure 1. Human SLAMF1 Protein, mFc-His Tag on SDS-PAGE under reducing condition.

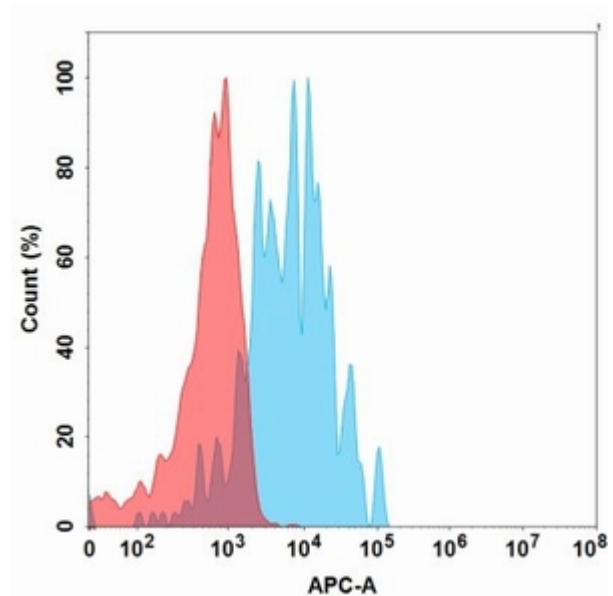


Figure 2. Flow cytometry analysis with 15 $\mu\text{g}/\text{ml}$ Human SLAMF1 Protein, mFc-His Tag (11152) on Expi293 cells transfected with Human SLAMF1 protein (Blue histogram) or Expi293 transfected with irrelevant protein (Red histogram).