

HUMAN SIGLEC10 PROTEIN, HIS TAG

目录: 11211

产品名称: Human SIGLEC10 Protein

规格: 10 µg, 50 µg and 100 µg

基因符号: SIGLEC10;Siglec-10;SLG2;PRO940;MGC126774

Target: SIGLEC10

UNIPROT ID: Q96LC7

描述: Recombinant Human SIGLEC10 protein with C-terminal 6xHis tag

背景: SIGLECs are members of the immunoglobulin superfamily that are expressed on the cell surface. Most SIGLECs have 1 or more cytoplasmic immune receptor tyrosine-based inhibitory motifs, or ITIMs. SIGLECs are typically expressed on cells of the innate immune system, with the exception of the B-cell expressed SIGLEC6 (MIM 604405).

Species/Host: HEK293

Molecular Weight: The protein has a predicted molecular mass of 59.0 kDa after removal of the signal peptide. The apparent molecular mass of SIGLEC10-His is approximately 70-100 kDa due to glycosylation.

Molecular Characterization: SIGLEC10(Met17-Thr546) 6×His tag

纯化: The purity of the protein is greater than 95% as determined by SDS-PAGE and Coomassie blue staining.

Formulation & Reconstitution: Lyophilized from nanodisc solubilization buffer (20 mM Tris-HCl, 150 mM NaCl, pH 8.0). Normally 5% – 8% trehalose is added as protectants before lyophilization.

储存和运输: Store at -20°C to -80°C for 12 months in lyophilized form. After reconstitution, if not intended for use within a month, aliquot and store at -80°C (Avoid repeated freezing and thawing). Lyophilized proteins are shipped at ambient temperature.

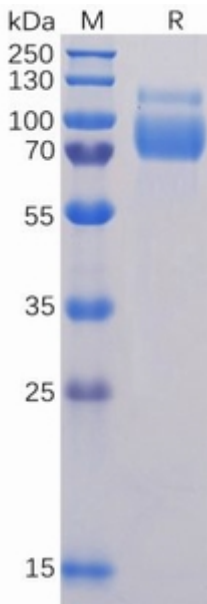


Figure 1. Human SIGLEC10 Protein, His Tag on SDS-PAGE under reducing condition.