

HUMAN PLA2R1 PROTEIN

目录: 12255

产品名称: Human PLA2R1 Protein

规格: 10 µg, 50 µg and 100 µg

基因符号: CLEC13C;PLA2-R;PLA2G1R;PLA2IR;PLA2R

Target: PLA2R1

UNIPROT ID: Q13018

描述: Recombinant Human PLA2R1 Protein with C-terminal 10xHis tag

背景: This gene represents a phospholipase A2 receptor. The encoded protein likely exists as both a transmembrane form and a soluble form. The transmembrane receptor may play a role in clearance of phospholipase A2, thereby inhibiting its action. Polymorphisms at this locus have been associated with susceptibility to idiopathic membranous nephropathy. Alternatively spliced transcript variants encoding different isoforms have been identified.[provided by RefSeq, Sep 2010]

Species/Host: HEK293

Molecular Weight: The protein has a predicted molecular mass of 160.5 kDa after removal of the signal peptide. The apparent molecular mass of PLA2R1-10xHis is approximately 130-250 kDa due to glycosylation.

Molecular Characterization: PLA2R1(Glu21-Ser1397) 10xHis tag

纯化: The purity of the protein is greater than 85% as determined by SDS-PAGE and Coomassie blue staining.

Formulation & Reconstitution: Lyophilized from nanodisc solubilization buffer (20 mM Tris-HCl, 150 mM NaCl, pH 8.0). Normally 5% – 8% trehalose is added as protectants before lyophilization.

储存和运输: Store at -20°C to -80°C for 12 months in lyophilized form. After reconstitution, if not intended for use within a month, aliquot and store at -80°C (Avoid repeated freezing and thawing). Lyophilized proteins are shipped at ambient temperature.

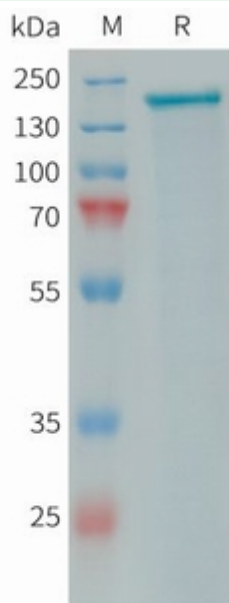


Figure 1. Human PLA2R1 Protein, His Tag on SDS-PAGE under reducing condition.