

HUMAN PD-1 PROTEIN, MFC-HIS TAG

目录: 11153

产品名称: Human PD-1 Protein

规格: 10 µg, 50 µg and 100 µg

基因符号: PDCD1;PD1;CD279;SLEB2

Target: PD-1

UNIPROT ID: Q15116

描述: Recombinant human PD-1 protein with C-terminal mouse Fc and 6xHis tag

背景: This protein is expressed in pro-B-cells and is thought to play a role in their differentiation. In mice, expression of this gene is induced in the thymus when CD3 antibodies are injected and large numbers of thymocytes undergo apoptosis. Mice deficient for this gene bred on a BALB/c background developed dilated cardiomyopathy and died from congestive heart failure. These studies suggest that this gene product may also be important in T cell function and contribute to the prevention of autoimmune diseases.

Species/Host: HEK293

Molecular Weight: The protein has a predicted molecular mass of 43.5 kDa after removal of the signal peptide.

Molecular Characterization: PD-1(Phe24-Vall70) mFc(Pro99-Lys330) 6×His tag

纯化: The purity of the protein is greater than 95% as determined by SDS-PAGE and Coomassie blue staining.

Formulation & Reconstitution: Lyophilized from nanodisc solubilization buffer (20 mM Tris-HCl, 150 mM NaCl, pH 8.0). Normally 5% – 8% trehalose is added as protectants before lyophilization.

储存和运输: Store at -20°C to -80°C for 12 months in lyophilized form. After reconstitution, if not intended for use within a month, aliquot and store at -80°C (Avoid repeated freezing and thawing). Lyophilized proteins are shipped at ambient temperature.

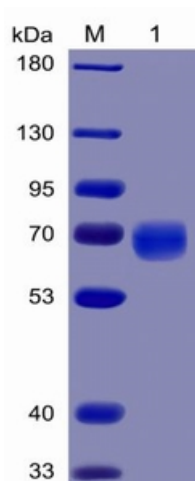


Figure 1. Human PD-1 Protein, mFc-His Tag on SDS-PAGE under reducing condition.

Human PD1, mFc Tagged protein ELISA

0.2 μ g of Human PD1, mFc Tagged protein per well

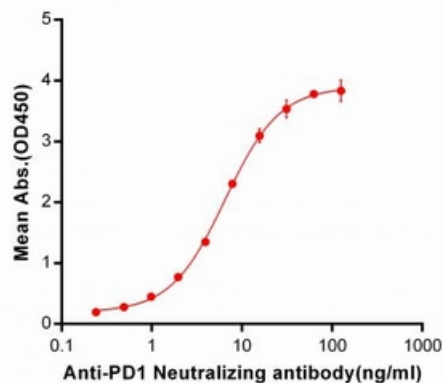


Figure 2. ELISA plate pre-coated by 2 μ g/ml (100 μ l/well) Human PD1, mFc-His tagged protein (11153) can bind PD-1 Neutralizing antibody 28015 in a linear range of 0.24-6.49 ng/ml.

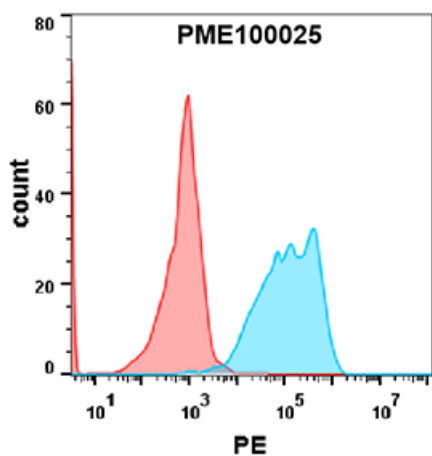


Figure 3. Flow cytometry analysis with 2 μ g/ml Human PD-1 Protein, mFc-His tag (11153) on Expi293 cells transfected with human PD-L1 (Blue histogram) or Expi293 transfected with irrelevant protein (Red histogram).

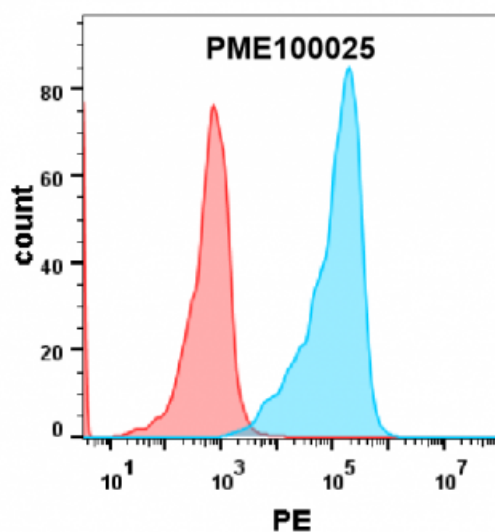


Figure 4. HEK293 cell line transfected with irrelevant protein (red histogram) and human PD-L2 protein (blue histogram) were surface stained with 2 μ g/ml Human PD-1 Protein, mFc-His tag (11153) followed by PE-conjugated Goat mouse IgG secondary antibody.