

**HUMAN NEFL (9-88) PROTEIN, HFC TAG**

目录: 11450

产品名称: Human NEFL (9-88) Protein

规格: 10 µg, 50 µg and 100 µg

基因符号: CMT1F;CMT2E;CMTD1G;NF-L;NF68;NFL;PPP1R110

**Target:** NEFL

**UNIPROT ID:** P07196

**描述:** Recombinant Human NEFL(9-88) with C-terminal human Fc tag

**背景:** Neurofilaments are type IV intermediate filament heteropolymers composed of light, medium, and heavy chains. Neurofilaments comprise the axoskeleton and they functionally maintain the neuronal caliber. They may also play a role in intracellular transport to axons and dendrites. This gene encodes the light chain neurofilament protein. Mutations in this gene cause Charcot-Marie-Tooth disease types 1F (CMT1F) and 2E (CMT2E), disorders of the peripheral nervous system that are characterized by distinct neuropathies. A pseudogene has been identified on chromosome Y. [provided by RefSeq, Oct 2008]

**Species/Host:** HEK293

**Molecular Weight:** The protein has a predicted molecular mass of 34.9 kDa after removal of the signal peptide. The apparent molecular mass of NEFL(9-88)-hFc is approximately 35-55 kDa due to glycosylation.

**Molecular Characterization:** NEFL(Thr9-Thr88) hFc(Glu99-Ala330)

**纯化:** The purity of the protein is greater than 95% as determined by SDS-PAGE and Coomassie blue staining.

**Formulation & Reconstitution:** Lyophilized from nanodisc solubilization buffer (20 mM Tris-HCl, 150 mM NaCl, pH 8.0). Normally 5% – 8% trehalose is added as protectants before lyophilization.

**储存和运输:** Store at -20°C to -80°C for 12 months in lyophilized form. After reconstitution, if not intended for use within a month, aliquot and store at -80°C (Avoid repeated freezing and thawing). Lyophilized proteins are shipped at ambient temperature.

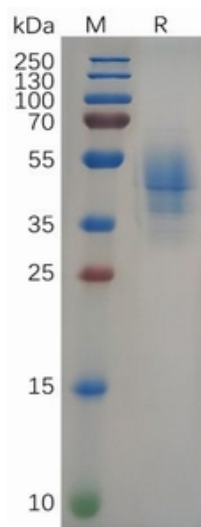


Figure 1. Human NEFL(9-88) Protein, hFc Tag on SDS-PAGE under reducing condition.

## Human NEFL(9-88), hFc tagged protein ELISA

0.1  $\mu$ g of Human NEFL(9-88), hFc tagged protein per well

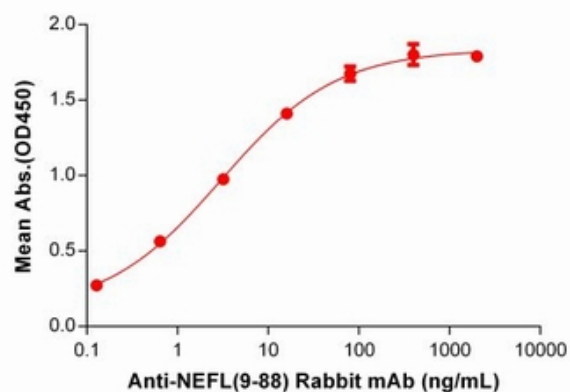


Figure 2. ELISA plate pre-coated by 1  $\mu$ g/ml (100  $\mu$ l/well) Human NEFL (9-88) Protein, hFc Tag (11450) can bind NEFL(9-88) antibody(DM198), Rabbit mAb 28541 in a linear range of 0.128-80 ng/mL.