

**HUMAN MELTF PROTEIN, HIS TAG**

目录: 11960

产品名称: Human MELTF Protein

规格: 10 µg, 50 µg and 100 µg

基因符号: CD228;MAP97;MFI2;MTf;MTF1

**Target:** MELTF

**UNIPROT ID:** P08582

**描述:** Recombinant Human MELTF Protein with C-terminal 6XHis tag

**背景:** The protein encoded by this gene is a cell-surface glycoprotein found on melanoma cells. The protein shares sequence similarity and iron-binding properties with members of the transferrin superfamily. The importance of the iron binding function has not yet been identified. This gene resides in the same region of chromosome 3 as members of the transferrin superfamily. Alternative splicing results in two transcript variants. [provided by RefSeq, Jul 2008]

**Species/Host:** HEK293

**Molecular Weight:** The protein has a predicted molecular mass of 76.2 kDa after removal of the signal peptide. The apparent molecular mass of MELTF-His is approximately 70-100 kDa due to glycosylation.

**Molecular Characterization:** MELTF(Gly20-Gln708) 6×His tag

**纯化:** The purity of the protein is greater than 85% as determined by SDS-PAGE and Coomassie blue staining.

**Formulation & Reconstitution:** Lyophilized from nanodisc solubilization buffer (20 mM Tris-HCl, 150 mM NaCl, pH 8.0). Normally 5% – 8% trehalose is added as protectants before lyophilization.

**储存和运输:** Store at -20°C to -80°C for 12 months in lyophilized form. After reconstitution, if not intended for use within a month, aliquot and store at -80°C (Avoid repeated freezing and thawing). Lyophilized proteins are shipped at ambient temperature.

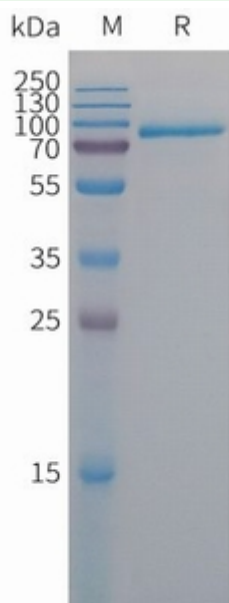


Figure 1. Human MELTF Protein, His Tag on SDS-PAGE under reducing condition.