

HUMAN LRG1 PROTEIN, HIS TAG

Cat.#: 11827

Product Name: Human LRG1 Protein

Size: 10 µg, 50 µg and 100 µg

Synonyms: HMFT1766;LRG

Target: LRG1

UNIPROT ID: P02750

Description: Recombinant Human LRG1 Protein with C-terminal 6xHis tag

Background: The leucine-rich repeat (LRR) family of proteins, including LRG1, have been shown to be involved in protein-protein interaction, signal transduction, and cell adhesion and development. LRG1 is expressed during granulocyte differentiation (O'Donnell et al., 2002 [PubMed 12223515]).[supplied by OMIM, Mar 2008]

Species/Host: HEK293

Molecular Weight: The protein has a predicted molecular mass of 35.2 kDa after removal of the signal peptide. The apparent molecular mass of LRG1-His is approximately 35-55 kDa due to glycosylation.

Molecular Characterization: LRG1(Val36-Gln347) 6×His tag

Purity: The purity of the protein is greater than 85% as determined by SDS-PAGE and Coomassie blue staining.

Formulation & Reconstitution: Lyophilized from nanodisc solubilization buffer (20 mM Tris-HCl, 150 mM NaCl, pH 8.0). Normally 5% – 8% trehalose is added as protectants before lyophilization.

Storage & Shipping: Store at -20°C to -80°C for 12 months in lyophilized form. After reconstitution, if not intended for use within a month, aliquot and store at -80°C (Avoid repeated freezing and thawing). Lyophilized proteins are shipped at ambient temperature.

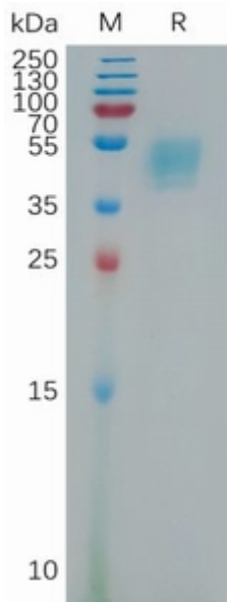


Figure 1. Human LRG1 Protein, His Tag on SDS-PAGE under reducing condition.