

## HUMAN IL2RA PROTEIN, HIS TAG

**Cat.#:** 11217

**Product Name:** Human IL2RA Protein

**Size:** 10 µg, 50 µg and 100 µg

**Synonyms:** IL2RA;D25;55;L2-RA;L-2-RA

**Target:** IL2RA

**UNIPROT ID:** P01589

**Description:** Recombinant human IL2RA Protein with C-terminal 6xHis tag

**Background:** The interleukin 2 (IL2) receptor alpha (IL2RA) and beta (IL2RB) chains, together with the common gamma chain (IL2RG), constitute the high-affinity IL2 receptor. Homodimeric alpha chains (IL2RA) result in low-affinity receptor, while homodimeric beta (IL2RB) chains produce a medium-affinity receptor. Normally an integral-membrane protein, soluble IL2RA has been isolated and determined to result from extracellular proteolysis. Alternately-spliced IL2RA mRNAs have been isolated, but the significance of each is presently unknown. Mutations in this gene are associated with interleukin 2 receptor alpha deficiency.

**Species/Host:** HEK293

**Molecular Weight:** The protein has a predicted molecular mass of 22.6 kDa after removal of the signal peptide. The apparent molecular mass of IL2RA-His is approximately 35-55 kDa due to glycosylation.

**Molecular Characterization:** IL2RA(Glu22-Cys213) 6×His tag

**Purity:** The purity of the protein is greater than 95% as determined by SDS-PAGE and Coomassie blue staining.

**Formulation & Reconstitution:** Lyophilized from nanodisc solubilization buffer (20 mM Tris-HCl, 150 mM NaCl, pH 8.0). Normally 5% – 8% trehalose is added as protectants before lyophilization.

**Storage & Shipping:** Store at -20°C to -80°C for 12 months in lyophilized form. After reconstitution, if not intended for use within a month, aliquot and store at -80°C (Avoid repeated freezing and thawing). Lyophilized proteins are shipped at ambient temperature.

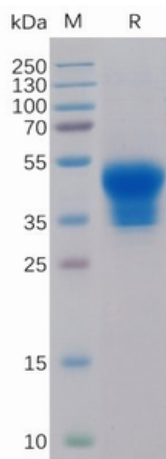


Figure 1. Human IL2RA Protein, His Tag on SDS-PAGE under reducing condition.

## Human IL2RA, His Tagged protein ELISA

0.2  $\mu$ g of Human IL2RA, His Tagged protein per well

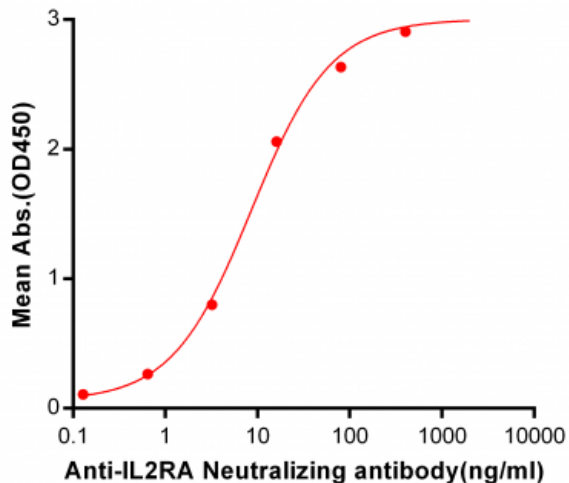


Figure 2. ELISA plate pre-coated by 2  $\mu$ g/ml (100  $\mu$ l/well) Human IL2RA, His tagged protein (11217) can bind Anti-IL2RA Neutralizing antibody 28052 in a linear range of 0.64-400 ng/ml.

## Human IL2RA, His tagged protein ELISA

0.2  $\mu$ g of Human IL2RA, His tagged protein per well

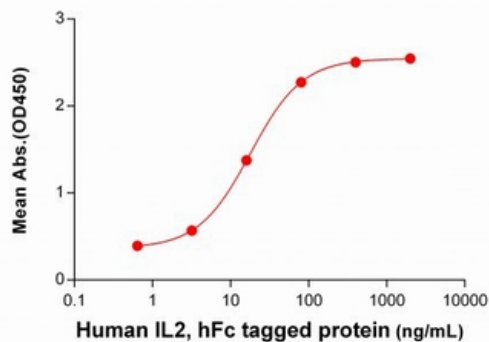


Figure 3. ELISA plate pre-coated by 2  $\mu$ g/ml (100  $\mu$ l/well) Human IL2RA Protein, His Tag (11217) can bind Human IL2 Protein, hFc Tag 11256 in a linear range of 0.64-400 ng/mL.