

## HUMAN IL1RL2 PROTEIN, HIS TAG

目录: 11974

产品名称: Human IL1RL2 Protein

规格: 10 µg, 50 µg and 100 µg

基因符号: IL-1Rrp2;IL-36R;IL1R-rp2;IL1RRP2

**Target:** IL1RL2

**UNIPROT ID:** Q9HB29

**描述:** Recombinant Human IL1RL2 Protein with C-terminal 6xHis tag

**背景:** The protein encoded by this gene is a member of the interleukin 1 receptor family. An experiment with transient gene expression demonstrated that this receptor was incapable of binding to interleukin 1 alpha and interleukin 1 beta with high affinity. This gene and four other interleukin 1 receptor family genes, including interleukin 1 receptor, type I (IL1R1), interleukin 1 receptor, type II (IL1R2), interleukin 1 receptor-like 1 (IL1RL1), and interleukin 18 receptor 1 (IL18R1), form a cytokine receptor gene cluster in a region mapped to chromosome 2q12. [provided by RefSeq, Jul 2008]

**Species/Host:** HEK293

**Molecular Weight:** The protein has a predicted molecular mass of 36.8 kDa after removal of the signal peptide.

**Molecular Characterization:** IL1RL2(Asp20-Arg335) 6xHis tag

**纯化:** The purity of the protein is greater than 85% as determined by SDS-PAGE and Coomassie blue staining.

**Formulation & Reconstitution:** Lyophilized from nanodisc solubilization buffer (20 mM Tris-HCl, 150 mM NaCl, pH 8.0). Normally 5% – 8% trehalose is added as protectants before lyophilization.

**储存和运输:** Store at -20°C to -80°C for 12 months in lyophilized form. After reconstitution, if not intended for use within a month, aliquot and store at -80°C (Avoid repeated freezing and thawing). Lyophilized proteins are shipped at ambient temperature.

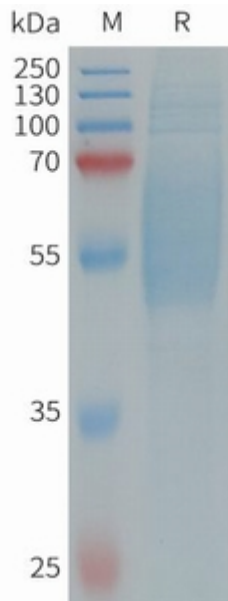


Figure 1. Human IL1RL2 Protein, His Tag on SDS-PAGE under reducing condition.