

HUMAN IL-20RB (C-FC) PROTEIN

Cat.#: 12071

Product Name: Human IL-20RB (C-Fc) Protein

Size: 10 µg, 50 µg and 100 µg

Synonyms: Interleukin-20 receptor subunit beta;IL-20 receptor subunit beta;IL-20R-beta;IL-20RB;IL-20R2;DIRS1;hCG_2022374;FNDC6;MGC34923;fibronectin type III domain containing 6;interleukin-20 receptor II

Target: IL-20RB

UNIPROT ID: Q6UXL0

Description: Recombinant Human Interleukin-20 Receptor Subunit Beta/IL-20RB is produced by our Mammalian expression system and the target gene encoding Asp30-Ala230 is expressed with a Fc tag at the C-terminus.

Background: Interleukin-20 receptor subunit beta(IL20RB) is a single-pass type I membrane protein and belongs to the type II cytokine receptor family. It contains 2 fibronectin type-III domains. There are two kinds of type II cytokine receptors : cytokine receptors that bind type I and type II interferons; cytokine receptors that bind members of the interleukin-10 family (interleukin-10, interleukin-20 and interleukin-22). Type II cytokine receptors are similar to type I cytokine receptors except they do not possess the signature sequence WSXWS that is characteristic of type I receptors. They are expressed on the surface of certain cells, which bind and respond to a select group of cytokines. These receptors are related predominantly by sequence similarities in their extracellular portions that are composed of tandem Ig-like domains. The intracellular domain of type II cytokine receptors is typically associated with a tyrosine kinase belonging to the Janus kinase (JAK) family.

Species/Host: HEK293

Molecular Weight: 49.6 KDa

Molecular Characterization: Not available

Purity: Greater than 85% as determined by reducing SDS-PAGE.

Formulation & Reconstitution: Lyophilized from nanodisc solubilization buffer (20 mM Tris-HCl, 150 mM NaCl, pH 8.0). Normally 5% – 8% trehalose is added as protectants before lyophilization.

Storage & Shipping: Store at -20°C to -80°C for 12 months in lyophilized form. After reconstitution, if not intended for use within a month, aliquot and store at -80°C (Avoid repeated freezing and thawing). Lyophilized proteins are shipped at ambient temperature.

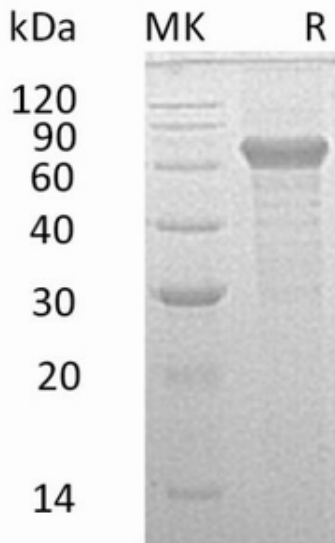


Figure 1. Greater than 95% as determined by reducing SDS-PAGE.