

## HUMAN IL-16 PROTEIN

**Cat.#:** 12026

**Product Name:** Human IL-16 Protein

**Size:** 10 µg, 50 µg and 100 µg

**Synonyms:** Pro-Interleukin-16; Interleukin-16; IL-16; Lymphocyte Chemoattractant Factor; LCF; IL16

**Target:** IL-16

**UNIPROT ID:** AAC12732.1

**Description:** Recombinant Human Interleukin-16 is produced by our E.coli expression system and the target gene encoding Met1-Ser130 is expressed.

**Background:** Interleukin-16 (IL-16) is a CD8 T cell-derived cytokine that induces chemotaxis of CD4 T cells and CD4 monocytes and eosinophils. Analysis by gel filtration suggests that, under physiological conditions, human IL-16 exists predominantly as a noncovalently linked multimer, but that some IL-16 may exist as a monomer. However, only the multimeric form appears to possess chemotactic activity, suggesting that receptor cross-linking may be required for activity. IL-16 also induces expression of IL-2 receptor (IL-2R) and MHC class II molecules on CD4 T cells. Human and murine IL-16 show significant cross-species reactivity.

**Species/Host:** E.coli

**Molecular Weight:** 13.4 KDa

**Molecular Characterization:** Not available

**Purity:** Greater than 95% as determined by reducing SDS-PAGE.

**Formulation & Reconstitution:** Lyophilized from nanodisc solubilization buffer (20 mM Tris-HCl, 150 mM NaCl, pH 8.0). Normally 5% – 8% trehalose is added as protectants before lyophilization.

**Storage & Shipping:** Store at -20°C to -80°C for 12 months in lyophilized form. After reconstitution, if not intended for use within a month, aliquot and store at -80°C (Avoid repeated freezing and thawing). Lyophilized proteins are shipped at ambient temperature.

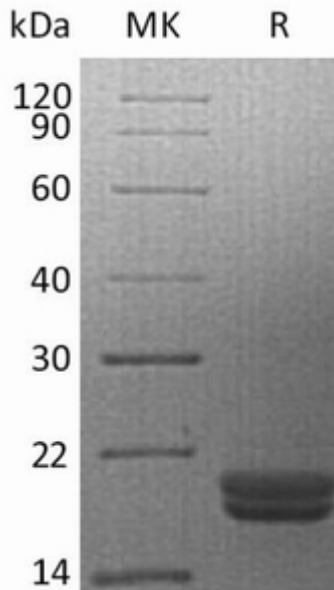


Figure 1. Greater than 95% as determined by reducing SDS-PAGE.